

Education Anytime, Anywhere,
Around the World



Complete Degree Programs
Traditional Classes | Online Training
Seminars & Workshops | Video Courses
Short Term Modular Classes
Career Enhancement | Self Enrichment

2019

2020



Catalog

Louisiana Baptist University
6301 Westport Avenue
Shreveport, Louisiana 71129
Call (318) 686-2360
Fax (318) 688-2148
E-mail: lbuinfo@lbu.edu

www.lbu.edu

WELCOME TO LOUISIANA BAPTIST UNIVERSITY



A Message from the President

Here at Louisiana Baptist University and Seminary it is not education as usual. In some ways LBU is reminiscent of an era when virtually all Bible colleges stressed preaching, soul-winning, and church planting. Our priorities are not political correctness, religious diversity, or teaching coping skills. Our goal is to train up an end-time army of ministers, Christian educators, and laypersons that will spread the gospel, confront the culture, and impact the world for Christ.

For over three decades it has been our privilege to train thousands of pastors, missionaries, Christian educators and business people that now literally serve around the world in many nations and cultures, while maintaining professional excellence and their Christian lifestyles. LBU has been a pioneer in distance education. We are now moving rapidly into the technology age in order to be able to train even more students at remote locations. In 2009 we added a state of the art course delivery system call Moodle. Moodle stands for “Modular Object Oriented Dynamic Learning Environment.” It will become LBU’s on-line community and course delivery system. This is the same system used by many large state universities and is in keeping with our commitment to provide the best possible education at an affordable price.

I trust this catalog will provide meaningful information about LBU and assist you as you seek God’s will in choosing the right university. We also invite you to visit us either in person or on our website to find out more about the unique programs of LBU.

Dr. Neal Weaver
President

FOUNDED IN 1973



Louisiana Baptist University was founded in 1973 and is a pioneer in distance education. Louisiana Baptist University students span the globe. They are successful pastors, missionaries, Christian educators and business leaders.

Education at LBU is based on the Judeo-Christian traditional approach in contrast to the humanistic, shifting systems of secular education. We believe the Christian traditional approach provides the student with the best possible degree programs and methods of study.

LBU provides both on-campus and external studies programs. Studies at LBU are geared toward busy adult

learners that need a student friendly, accelerated program to accommodate their busy life styles. On-campus courses are offered in once a week format. Off-campus courses can be taken through printed syllabi, videotapes and the Internet. Students are also offered a variety of on-campus workshops and regional workshops. Graduate students have the option of completing their degree through LBU or through Louisiana Baptist Theological Seminary.

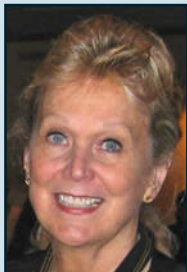
Our Vision

To honor the Lord by equipping and inspiring Christians with the educational skills necessary to fulfill the Great Commission.

REASONS TO CHOOSE LBU



- ▷ LBU has over 30 years experience as a proven leader in non-traditional education.
- ▷ LBU has over 30 adjunct and full-time professors holding doctorates in their fields who are committed to offering a first-class off-campus program.
- ▷ LBU offers a variety of degrees that may be completed by means of the Internet.
- ▷ LBU offers an interest-free payment plan that is affordable.
- ▷ LBU has successful graduates around the world serving in Ministry, Christian Education, Counseling and Communications.
- ▷ LBU has a friendly administration committed to serving the student's needs.
- ▷ LBU puts the student first.



"Earning a degree from LBU was different; it has taken me back to earlier days – to early and new untouched faith. All my work at LBU pulled me closer to what I have always known to be God's words. After treading water in so many places that gave me the best the world has to offer, I found myself amazingly drawn back to the basics. Every single course brought me closer to the Lord. LBU is a place of hope for God's people - you offer degrees about destiny. The more I ploughed my way through the required courses and then the dissertation, the more my soul was actually shored up."

Dr. Patricia Hutchens

PROGRAMS OFFERED



It is the goal of LBU to offer the best possible education both on-campus and through external studies. We concentrate on quality academics that are also practical.

Louisiana Baptist University was founded for the purposes of providing quality education in a Christian atmosphere. While staying abreast of what is new we will never abandon our strong Biblical foundation.

We offer the following degrees tailored for today's professional.



Louisiana Baptist University

SCHOOL OF BIBLE

B.A., M.A., Ph.D.

SCHOOL OF COUNSELING

B.A., M.A., Ph.D.

SCHOOL OF COMMUNICATIONS

B.A., M.A., Ph.D.

SCHOOL OF CHRISTIAN EDUCATION

A.A., B.A., M.A., Ph.D. or Ed.D.

THEOLOGICAL SEMINARY

M.M., M.A., M.Div.,
D.Min., Ph.D.



GETTING STARTED



Dr. Sandra Cory, Executive Vice-President

A complete evaluation is conducted on anyone seeking to further their education through LBU. The evaluation is free of charge. The evaluation packet, as well as the complete catalog can be downloaded from our website at www.lbu.edu, or you may contact our office at 318-686-2360. The packet includes an LBU Catalog, Transcript Request Form, and a Request for Evaluation Form.

The process of evaluation begins after the items listed above have been completed and returned, along with transcripts from previous colleges, and a detailed résumé. After the evaluation is completed, you will receive a letter informing you of any life credit that may have been awarded, total number of hours needed to complete your degree, and the total cost of the program. Registering students are required to pay a \$200 down payment and interest free payments of \$100 a month. Should you need to withdraw from the program, you will not be required to pay for any courses not completed through LBU.

After all completed forms are returned along with the down payment of \$200, you will receive all the materials needed to begin your program. Students also have three choices of course delivery; 1) via mail, 2) via email, or 3) via our online delivery system called MOODLE.

Should you have any questions through the process of evaluation or enrollment your advisor is only a phone call or email away.

Sandra Cory
Executive Vice-President
of Administration

Call Today! 318-686-2360
www.lbu.edu

GENERAL INFORMATION

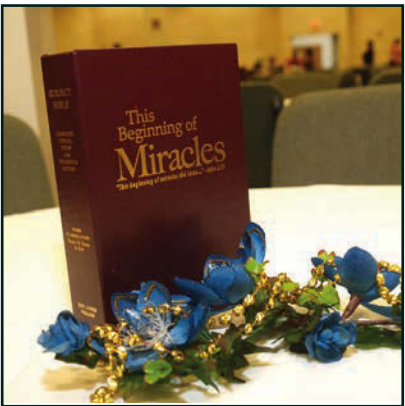


TABLE OF CONTENTS



GENERAL INFORMATION	9
DOCTRINE of the UNIVERSITY	10
MISSION of the UNIVERSITY	11
ADMINISTRATION and FACULTY	14
ADMISSIONS POLICIES and PROCEDURES	16
ACADEMIC POLICIES and INFORMATION	17
FINANCIAL INFORMATION	26
DEGREE PROGRAMS - GENERAL INFORMATION.....	28
SCHOOL of BIBLICAL STUDIES.....	31
SCHOOL of CHRISTIAN COMMUNICATIONS.....	44
SCHOOL of CHRISTIAN COUNSELING	52
SCHOOL of CHRISTIAN EDUCATION.....	58
HISPANIC PROGRAM.....	64
UNIVERSITY COURSE TITLES and DESCRIPTIONS	67
THEOLOGICAL SEMINARY DIVISION.....	105
SEMINARY DIVISION COURSE TITLES and DESCRIPTIONS....	109
EXECUTIVE, SUPPORT and ACADEMIC PERSONNEL	121

LOUISIANA BAPTIST UNIVERSITY CATALOG 2018-2019

GENERAL INFORMATION

CATALOG INFORMATION

This catalog contains general information regarding the Louisiana Baptist University (LBU) calendar, administration, admissions and graduation requirements, fees, other regulations, degree programs, and course offerings. LBU reserves the right to change each of these. The effective dates for all changes are at the discretion of the institution and may apply to all those who are matriculated at LBU at that time. The provisions of this publication are not to be regarded as an irrevocable contract between you and Louisiana Baptist University.

STUDENT RESPONSIBILITY

You are responsible for knowing and meeting all degree and graduation requirements specified in the catalog for the year of your admission.

Attendance at LBU is a privilege and not a right. You forfeit this privilege if you do not participate as a student within the standards and ideals of the institution. LBU has the right to insist upon your withdrawal if and when you do not conform to the rigorous academic and spiritual standards of the institution.

GOVERNANCE AND CONTROL

Louisiana Baptist University is a non-profit corporation chartered by the State of Louisiana, originally founded under the auspices of Baptist Tabernacle of Shreveport, Louisiana and is an approved school of Baptist Bible Fellowship International. The BBFI is a fellowship with over 3,000 churches in the U.S., Canada and other countries along with four colleges and universities in the U.S. It also has Bible colleges and institutes in several foreign nations and missionaries serving in 97 countries.

Louisiana Baptist University serves as a primary post-secondary education resource for baccalaureate and graduate education for the ministerial staffs of many of the 3,000 local churches as well as the institution of choice for ministers and other professionals from numerous other church denominations.

The University is governed by an independent Board of Trustees. The Board of Trustees consists of Christian representatives from the ministry, business and industry, education and the general public who serve without compensation. They are guided by the same sound, biblical principles upon which the Christian church was founded and uphold the Judeo-Christian tradition of post-secondary education in the United States.

HISTORY

Just as individuals change and develop with time, Louisiana Baptist University has developed in significant and proactive ways. In our world of accelerated change, it is important to plan carefully for where we are going, but it is also appropriate to consider from whence we have come.

Louisiana Baptist University was founded in 1973 by the Baptist Tabernacle in Shreveport, Louisiana. Dedicated Christian educators and church leaders recognized the need to form an institution in Louisiana to train Christian leaders in the finest traditions of conservative Judeo-Christian education. This institution was a pioneer in offering outstanding programs in distance education and external degree programs for practicing professionals who wish to enhance their professional skills and competence. Many of the nation's leading pastors hold degrees from the University.

As the University has grown, it has also expanded its academic programs to include Christian communications, Christian counseling and Christian education.

In February of 1993, the administration and the Board of Trustees revised the charter and restructured the administration to parallel the expanding programs of the University. At that time it was appropriate to change the name to Louisiana Baptist University. The new name has been well received by current students, alumni and appropriate agencies.

As a part of its significant growth and development, the University has instituted a Seminary Division. Information concerning the Seminary Division is located in this catalog beginning on page 103.

From a modest beginning, LBU has steadily developed into what is today an important institution in Christian higher education.

DOCTRINAL STATEMENT

Louisiana Baptist University is founded on the following doctrines. We believe:

- In the plenary inspiration and authority of the Scriptures; that the Bible reveals God, the fall of man, the way to receive salvation, and God's plan and purpose in the past, present, and in eternity.
- In the Holy Trinity—God the Father, God the Son, and God the Holy Spirit.
- In the deity, virgin birth, and bodily resurrection of Jesus Christ.
- That the conditions to salvation are repentance and faith. That people are justified by faith alone and are accounted righteous before God only through the merit of the Lord and Savior, Jesus Christ.

- That salvation is by Grace through faith and all believers are eternally saved.
- In the everlasting, conscious reward for the saved and the everlasting, conscious punishment of the lost.
- In the visible, personal, pretribulational, and premillennial return of the Lord Jesus Christ.
- That the New Testament church is a local body of baptized believers who are covenanted together to make disciples, baptize and teach them Christian principles.
- In the ordinance of baptism by immersion of the believer in water, by the authority of the local church, to show the death and burial of the old life, and resurrection to walk in the new life of the Christian.
- In the Lord's Supper as an ordinance to be observed by the local church in the church's capacity to show forth the central importance of the Lord's death, Resurrection and Second Coming.
- In the Genesis account of creation, and that it is to be accepted literally and not allegorically or figuratively. That God created all life forms and established divine law that all things shall bring forth only "after their own kind."
- In the biblical description of the existence of Satan, the adversarial spirit, who acts as tempter and accuser and who is an enemy of the work of God in Creation and human affairs.
- We believe that God gives spiritual gifts to all believers for the edification of the church and the building up of the body of Christ.

MISSION STATEMENT

Louisiana Baptist University was founded for the purpose of providing a quality education in a Christian atmosphere. The University endeavors to provide sound learning experiences so the students can obtain the knowledge, skill, and understanding required for success in their professional field. The objectives and purpose of this institution further stated are:

- a) To provide courses of instruction in a Christian atmosphere, through on-campus classes, regularly scheduled workshops, and a quality nonresident program using qualified faculty mentors, by which persons of both sexes and diverse backgrounds may be taught in such branches of useful and practical knowledge as shall fit them for professions requiring applied knowledge in the arts and sciences, ministry and other branches of knowledge.
- b) To train Christian workers for Christian service through a Christ-centered program of traditional Judeo-Christian education.
- c) To properly train individuals for specific Christian service, both full and part time.
- d) To offer and grant degrees which are approved by the Board of

Trustees, upon the completion of a program of rigorous, required courses; to facilitate instruction and conduct examinations in theology and other branches of human knowledge, in order to carry out the purposes of these educational goals.

- e) To provide social, academic and psychological guidance and counseling in a Christian perspective.
- f) To engage in other lawful activities normally performed by institutions of higher education in the United States and for which corporations may be formed under the Non-Profit Corporation Law of Louisiana.

The University's mission is to provide rigorous, high quality academic study for experienced professionals. It builds upon professional and personal competence and seeks to enhance that competence through scholarly inquiry and constantly improving ministerial and professional practice.

In this era of continuing education with its positive emphasis on continuing development, it is necessary to continue personal and professional growth to serve more effectively in an educated society and global community. ***Our commitment is to provide meaningful lifetime learning.***

In order to meet those needs the University seeks to:

1. Create alternative postsecondary, graduate level opportunities for pastors, counselors, missionaries, evangelists and other Christian professionals.
2. Offer nonresident studies comparable to resident programs through the tutorial supervision of qualified faculty mentors.
3. Enable experienced, mid-career, self-motivated ministers and other professionals to earn advanced degrees without leaving their present ministries and professional settings.
4. Enhance professional competency by providing relevant, practical, advanced learning opportunities and the application of biblical and theological principles in the Judeo-Christian tradition.
5. To integrate and build upon the experiences available to the adult student who serves in a local ministerial assignment or other profession as a competent, practicing professional.

OUR PHILOSOPHY

Education at LBU is based on the Judeo-Christian traditional approach in contrast to the humanistic, shifting systems of secular education. We believe the Christian traditional approach provides the student with the best possible degree programs and methods of study. We seek to impart to you communication skills in language and knowledge of subject matter in the various academic disciplines in harmony with Holy Scripture.

The objective of Christian education is to develop within the framework of your God-given personality, abilities, and potential, an individual who is articulate, knowledgeable, and of sound Christian character.

The institution believes in the dignity and worth of individuals of all races and ethnic groups and in the scriptural basis for treating all people with respect and fairness.

The University has been recognized by the Southern Christian Leadership Conference of Atlanta, Georgia for its proactive efforts in racial understanding and educational services provided to minorities.

OUR VISION

To honor the Lord by equipping and inspiring Christians with the educational skills necessary to fulfill the Great Commission.

CREDIBILITY OF EXTERNAL STUDIES

In the 1920's UCLA coined the phrase "Life Long Learning". They were one of the early proponents of continuing education. As continuing education programs grew also came the growth of non-traditional education; education offered at non-traditional hours, at remote locations and in specialized educational packages. As the adult learners became more mobile so did education. More universities began to offer programs in distance or external education. Early leaders were Nova University, Union Institute, the University of Maryland and the University of Phoenix. The University of Phoenix was founded 1976 and was among the first to offer a complete degree program through external studies. Early on their program was ridiculed by traditional universities but today they have over 450,000 students and are probably the most imitated program in the nation. Virtually all large universities now offer some off-campus classes.

Two of the first Bible colleges to offer external studies were Liberty University and Louisiana Baptist University. LBU was founded in 1973 and has been a pioneer in distance education since its inception. LBU has a large selection of courses available; in Bible, Education, Counseling and Communications. LBU now has students in virtually all of the 50 states and in over 40 foreign countries.

At LBU you will earn your degree in the most convenient and efficient way possible. With excellent curriculum and outstanding faculty support your education will be comparable to what you would receive at a traditional university. All course work is designed to allow you to pursue your education while you remain at home and serve in your own community. All course work is designed to be immediately utilized in your environment and programs are updated on a regular basis to provide the very best of materials.

ADMINISTRATION AND FACULTY

EXECUTIVE OFFICERS

PRESIDENT

NEAL WEAVER, Th.D., Ph.D.

EXECUTIVE VICE- PRESIDENT
OF ADMINISTRATION

SANDRA CORY, D.R.E.

DEPARTMENT OF INSTITUTIONAL ADVANCEMENT

ASSOCIATE VICE-PRESIDENT

MARK CROOK, Ph.D.

OFFICERS OF ADMINISTRATION

DAVID KEENY, B.A., M.Div.

Dean of School of Biblical Studies

MARK CROOK, Ph.D.

Dean of School of Psychology and Christian Counseling

LINDA ADAMS, Ph.D.

Dean of the School of Christian Education

THOMAS BROCK, B.A., M.DIV.

Associate Dean of Seminary

JUAN PUENTE, B.A., M.A., Ph.D.

Dean of School of Hispanic Studies

JAY FOSTER, B.A., M.DIV., Ph.D.

Assistant Dean of School of Biblical Studies and Prison Ministry

FACULTY

Each degree program is coordinated by an appropriately credentialed academic professional. Eighty-six per cent hold terminal degrees, normally the doctorate. The present faculty-to-student ratio is excellent and there is an adequate pool of qualified staff that can serve as mentors and advisors to assist you in your course work. The programs are designed so that you may complete a significant percentage of your work independently, thereby reducing the frequency with which you must meet with your instructors. With your previous record of professional achievement and with appropriate focus and dedication, you can succeed in your academic program with the excellent faculty supervision which is readily available.

On-campus faculty and external mentors are utilized to determine the specific current requirements for your program of study. This process allows LBU to tailor your program to the needs of your professional setting and to your professional goals.

Provost, James O. Combs



ADMISSIONS POLICIES AND PROCEDURES

ADMISSIONS STATEMENT

The institution admits students regardless of race, color, and national or ethnic origin, and grants all rights, privileges, programs and activities generally accorded or made available to all other students at LBU. Further, LBU does not discriminate based on race, color, gender and national or ethnic origin, nor handicap in the administration of its educational and other policies, admissions, disciplinary actions, scholarship programs, and other school-administered programs.

Studies at LBU are geared toward busy adult learners that need a student friendly, accelerated program to accommodate their busy life styles. It is expected that the successful applicant for admission will have attained an appropriate educational level and will have demonstrated professional competence (or such potential) at a level which would prepare him/her for the academic program for which they are applying.

ADMISSION PROCEDURES

If you wish to apply to an LBU degree program, please use the following check-list of procedures:

1. Request for Admission: Complete the Request for Evaluation form which accompanies this catalog or write to the LBU Admissions Office at the address shown below. A Request for Evaluation can also be submitted at www.lbu.edu.
2. Photograph: Attach a recent photograph of yourself for identification purposes.
3. References: You must provide three references.
4. Résumé: Submit a formal, complete and professional resume describing all career experiences and positions held. Include any formal or informal training in which you participated that was related to your professional activities.
5. Transfer Credits: If you expect to transfer credits from other institutions of higher education, request a complete official transcript from each institution and have them send it directly to:

**LOUISIANA BAPTIST UNIVERSITY
ADMISSIONS OFFICE
6301 Westport Avenue
SHREVEPORT, LOUISIANA 71129**

6. **Notification:** Upon receipt of the above information, the Admissions Office will notify you in writing of your standing. **You are not officially enrolled until the signed financial agreement, signed student application, and list of preferred courses or research courses is returned along with the appropriate enrollment fees.**

ADMISSION OF FOREIGN STUDENTS

Admission procedures for foreign students are essentially the same as students who are citizens of the USA. In order to receive an admissions evaluation, the student must include the same information as USA students. If the University has a representative in your country they will contact you. Otherwise, all correspondence will be handled directly from the LBU Admissions Office.

ACADEMIC POLICIES AND INFORMATION

Louisiana Baptist University is an undergraduate and graduate level, coeducational, Christian liberal arts university chartered by the State of Louisiana.

As one of four approved colleges and universities of the Baptist Bible Fellowship International of Springfield, Missouri. The BBFI is a fellowship with approximately 3,000 churches in the United States and several foreign countries.

Louisiana Baptist University is a member school of the Association of Christian Schools International. ACSI is the largest association of Christian schools in the world and holds recognized status.

Louisiana Baptist University is an affiliate institution of the Association for Biblical Higher Education. As such, it participates in and contributes to collegial and professional development activities of the Association. Affiliate status does not, however, constitute, imply, or presume ABHE accredited status at present or in the future.

Louisiana Baptist University on the basis of its academic standards, financial stability and extensive curriculum is comparable to other fully accredited universities. However, as primarily a religious institution, LBU has not sought either regional or national accreditation by a secular accrediting agency.

To better meet the academic and professional development needs of the student, LBU continually seeks to improve the quality of the institution. For this reason, LBU is periodically examined by an independent review committee comprised of ministers and educators. (Academic reviews are found on pages 22-23 of this catalog.)

TRANSFERRED CREDITS

The acceptance of course credit from another institution of higher education to LBU involves consideration of accreditation, acceptability of course content, and the applicability of that course work to a LBU degree program. Evaluated transcripts are used by faculty advisors for academic advising.

The following types of transferred credits are considered:

1. **Regional and National Accreditation:** LBU transfers credit for appropriate courses completed at institutions that have been granted accreditation by regional or national accrediting bodies recognized by the United States Department of Education. LBU considers all transfer credit on an individual basis.
2. **Lack of Regional or National Accreditation:** LBU considers for transfer credit, appropriate courses at institutions which have not sought or achieved accreditation by an accrediting body recognized by the U.S. Department of Education, including Bible Colleges, Bible Institutes, foreign institutions, and others, on an individual basis. A careful evaluation is completed of these requested transfer credits and the student is generally accepted on probation, requiring a 2.8 minimum GPA for the first 15 credit hours attempted at Louisiana Baptist University.
3. **Articulation Arrangement:** LBU joins with other private and public institutions of higher education in agreeing to accept appropriate credits that apply to specific programs offered at LBU.

NONTRADITIONAL CREDIT

Three types of nontraditional credit for which a student may apply are summarized below. They are Experiential Learning Credits, Military Experience Credits, Credit by Examination and Advanced Standing.

EXPERIENTIAL LEARNING CREDITS

LBU will allow limited credit for relevant knowledge or skill that you have acquired through professional and life experiences. Experiential learning credits may have been earned in the ministry and other professions or other non-classroom settings. Appropriate seminar and workshops are eligible for credit. Students who feel that they qualify for experiential learning credits may do so through course petitions and appropriate documentation. For additional information and the credibility of experiential learning go to www.cael.org.

MILITARY CREDITS

You may be awarded credit for experience obtained while serving in the armed forces. To earn such credit, you must submit required documentation explicitly supporting appropriate learning experiences while in any military service for any nation which is a member of the United Nations.

CREDIT BY EXAMINATION

LBU-LBTS accepts testing by CLEP, PEP, and CELT. You may also be interested in taking written examinations under the Advanced Placement Program (APP) administered by LBU. In order to receive course credit in subjects in which you have adequate knowledge, you must achieve a minimal test score established by LBU. If you are interested in pursuing credit by examination, contact the Admissions Office.

EVALUATION OF CREDITS

To receive an evaluation of your previous formal studies as well as nontraditional learning experiences, simply forward the documents listed below:

1. Transcripts of all prior formal education at the postsecondary level.
2. A schedule of self-study courses, seminars, workshops, and other informal education.
3. A detailed resume of life experiences.
4. At least three references.

**LOUISIANA BAPTIST UNIVERSITY
ADMISSIONS OFFICE
6301 Westport Avenue
SHREVEPORT, LOUISIANA 71108**

ADMINISTRATIVE OFFICE HOURS
Monday - Thursday - 8:00 A.M. - 4:30 P.M. CST
Friday - 8:00 A.M. - 12:00 P.M. CST

THE CONCEPT OF EXTERNAL STUDY IN POSTSECONDARY EDUCATION

The external studies strategy in postsecondary education was developed to meet the need for quality education for those who, because of schedule or geographic location, could not pursue their education within traditional delivery systems.

Begun primarily as an opportunity for full-time ministers to complete their degrees without leaving their pastorates, LBU now offers a full range of undergraduate and graduate programs that include Biblical Studies, Christian communications, Christian counseling, Christian education, and other fields of specialized studies.

This approach offers programs that accommodate the need for a flexible schedule by the working professional. Further, it provides an opportunity for you to pursue a rigorous degree program without moving from your place of professional employment.

These programs have benefited many thousands of students since LBU's founding in 1973. Pastors, educators, counselors and business professionals have found that the external programs provide the quality education and professional development which they require.

TYPICAL STUDENT

The program serves the mature, self-motivated student who has the self-discipline to succeed in a rigorous individual, self-paced program. All programs are specifically designed for the busy adult professional who needs a flexible and adaptable schedule in order to meet rigorous degree requirements.

These educational experiences include seminars, traditional correspondence courses, research courses with mentor supervision, practicums, and structured cooperative education courses.

LIBRARY AND RESEARCH METHODS

Because most external study program activities are completed in your local area, you are required to contact and establish a working relationship with local academic libraries and resource centers.

You are provided with the toll-free number of publishers and other sources from which you are able to purchase all textbooks and other learning resources that are required for course completion.

Those students living outside a reasonable commuting area are expected to provide evidence that they have access to appropriate library facilities. LBU

provides to students guidelines for conducting library research and a publication providing detailed information regarding the carrying out of such research and writing. In addition, research projects will require activities of other kinds.

ON-LINE LIBRARY RESOURCES

Need a research paper? Need resources for a course assignment or your dissertation? Now you can secure data through the on-line library. Check our LBU website for links to over 10,000 religious resource organizations.

ACADEMIC STATUS OF EXTERNAL STUDY

The external studies program carries the same requirements as other on-campus programs. You, as a distance education student, are required to meet academic standards equal to or greater than those of the on-campus student. This assures that the high standards of LBU's distance educational programs are maintained. The program is administered analogous to an on-campus program. At the completion of the degree, the student will be issued a transcript and perpetual records are maintained by the University. Students are expected to participate in the annual commencement exercises in the year of their degree completion. A team of qualified mentors, consultants, faculty and administrators regularly monitor the external program's curriculum materials as well as your individual progress in your program of study.

ACADEMIC REVIEWS

Dr. Leland R. Kennedy, Chancellor
Baptist Bible College/Graduate School
Springfield, Missouri

I am happy to present my personal, overall assessment of Louisiana Baptist University. This evaluation is based on my acquaintance with the leadership and staff of the university; a visit to the campus, and a review of the curriculum.

The leadership and staff maintain a high level of integrity, competence and dedication to the stated purpose of the university.

My review of the curriculum was positive. From a Bible school perspective; the core curriculum is very adequate to train and equip students for church ministry. I recommended and implemented the use of the curriculum for the International Baptist College of Western Europe located in Belgium.

The distance education program provides excellent education for off-campus students. It is also a great source for advanced training of continuing education for those unable to attend traditional classes.

The university maintains a strategy for the continual development and improvement of its programs. Present efforts include: Expansion of on-campus training; a strong Greek and Hebrew Department; on-campus Spanish classes, and the development of foreign language curricula.

I am happy to join many notable educators who have evaluated Louisiana Baptist University with a positive assessment.

Dr. Harold Ledford
Director of Development and Continuing Education
Louisiana State University, Shreveport, Louisiana

In reviewing the Christian Education department of Louisiana Baptist University, I find that it meets the national norms in all areas that I reviewed. Many of the education textbooks are the same as the ones used at Louisiana State University and other major universities. The study guides reinforce and supplement the learning experience. Each course requires several research papers and a comprehensive final test. The university also offers several seminars and workshops each year so that students can interact with faculty and compliment their self-study. The university has a staff of well-qualified advisors that can be reached five days a week by phone, fax or e-mail.

Dr. John Steffens
Vice Provost
University of Oklahoma

My overall assessment of Louisiana Baptist University is very good. The course offerings clearly meet national norms. The study guides are well designed and are augmented with additional required research papers. The final test is administered under the direction of a proctor in order to insure academic integrity. Students have easy access to qualified instructors through phone, fax, or e-mail. It is the intent of the university to offer an academically sound education in a Christian environment, clearly they are succeeding.

Dr. Richard Thompson
Director of Vocation Education
Commonwealth of Puerto Rico

I first reviewed the Louisiana Baptist University in May of 1993, when I was Director of the Bureau of Student Services of the Louisiana Department of Education. I was impressed with the quality of their program and with their enthusiasm and dedication to excellence. I indicated at that time that I thought LBU had great possibilities.

In the 10 years since, the university has improved its facilities, increased its course offering, hired additional professionals, and quadrupled its student body while maintaining that enthusiasm and dedication to excellence.

ON-CAMPUS/ECAMPUS

Louisiana Baptist University offers a full schedule of on-campus classes for those who live in the Shreveport area. Our on-campus program features a large selection of day and night classes to accommodate our students. Those interested in on-campus classes should request an on-campus bulletin that is published each semester. The on-campus bulletin lists all current classes and times, as well as faculty members that will be teaching.

An ever increasing number of our distance students are beginning to take advantage of e-campus class offerings each semester. This technology is making it possible for students who live outside the state of Louisiana or outside the continental United States to be able to enroll and participate in many of the classes being offered on-campus.

COURSE WORK AND ACADEMIC ADVISORS

As a part of your admissions process, you will be informed regarding the specific courses you will be required to complete in the degree program which you have selected. This will be based on the evaluation of all of your prior earned course credits accepted by LBU.

Materials which are required for the courses taken are provided to you in individual course syllabi that detail all requirements for successful completion of that course. Information is provided concerning assignments, textbooks, the research and written reports required examinations, and other requirements which may be a part of individual courses.

Louisiana Baptist University makes every effort to utilize the best available textbooks for each course offered; however, this does not mean that Louisiana Baptist University endorses the entire content of each given text. We believe in the plenary verbal inspiration of the Bible. We believe the Textus Receptus is a superior text, and we use it for Greek instruction, likewise we use the King James Version in all Bible classes.

Louisiana Baptist University does not participate in the modern day charismatic movement and therefore does not select curriculum or engage in classes that promote the modern day tongue movement. Believing that hyper-Calvinism tends to diminish the responsibility of students witnessing to others, LBU does not select textbooks or teach classes that promotes hyper-Calvinistic beliefs.

Research courses are described in uniform, printed course requirements, as are the requirements of Cooperative Education courses.

Careful attention is given to assure that evaluation standards and methods for all distance education courses conform to those used for on- campus programs.

Once you select a course of study, you will be assigned an instructor/faculty advisor. Your individual academic needs will determine the frequency of interaction between you and your Academic Advisor or your instructor.

Academic seminars and workshops are held in different geographic areas throughout the year for your convenience. There, you may also meet personally with an advisor or instructor. Other faculty and staff members are available to you as needed.

Your completed work is to be forwarded to your instructor for evaluation and critique. The evaluation of your work is usually completed within five working days. A maximum of ten working days is normal for evaluation and return of your completed assignment or examination.

ACADEMIC REQUIREMENTS

Requirements for graduation are individually approved by your Academic Advisor within the general guidelines for course requirements for degree programs at LBU.

STUDENT ACADEMIC LOAD

Normal full time academic course load is twelve to fifteen semester hours depending upon the program in which the student enrolled. Maximum load is twenty-one semester hours.

COMMENCEMENT REQUIREMENTS

Commencement exercises are conducted annually in May and all degrees are conferred at that time for degree programs completed in the previous twelve months. All students must attend the graduation workshop and commencement. The Graduation workshop serves as the student's final course and is required to complete the student's degree program. Topics and speakers will vary from year to year.

TIME FOR DEGREE PROGRAM COMPLETION

All degree programs must be completed within a maximum of five years, unless otherwise approved on an individual basis and because of extraordinary circumstances.

CONFERENCES, WORKSHOPS, AND MODULAR CLASSES

Each year the university conducts numerous conferences, workshops, and modular classes. These special programs are designed for those who would

like to complete part of their work on-campus but because of their schedule cannot attend regular on-campus classes. Enrolled students receive regular mailings of upcoming events or they can simply check the web-site at www.lbu.edu. Students will receive three hours credit (3SCH) for each session attended and the academic assignments connected therewith. No more than 30% of the student's total semester credit hours can be earned through conferences and/or workshops. This does not include Modular classes.

COOPERATIVE EDUCATION

A number of learning experiences for the graduate and undergraduate student are offered in a cooperative education format. This arrangement allows the student to pursue structured, supervised learning experiences in a professional setting which is appropriate to his/her academic major and professional goals. Preparatory readings, regular reports and close supervision are integral components of the cooperative education learning experiences. In this learning experience, the student may function as an intern, professional, or volunteer in a church, Christian school, social agency, business or other appropriate environment.

This combination of on-the-job experience and academics provides the well-rounded education that prepares you for success in your chosen field. Co-op students are often prepared in a superior manner because they have had the opportunity to pursue academic training combined with practical experience. This program was designed through consultation with the University of Maryland and patterned after their materials.

FIELD EDUCATION

The purpose of field education is to provide the real life experiences that integrate with classroom studies to better equip the student for future opportunities. Apprenticeship education is virtually as old as written history and has an important place in the overall educational process. The emphasis of field education is on learning. Field education should not be confused with Christian service. Field education must be both quantitative and qualitative. It also must be monitored and verifiable. Students may serve internship in ministry, Christian education, counseling settings, business environments or in a variety of media and music venues. All forms of field education must be approved by the student's faculty advisor.

NEW TECHNOLOGY AND GLOBAL INTERNET COURSES

Due to the rapid change in technology, Louisiana Baptist University is constantly revising and adding new programs in order to keep up with new developments. In 2009, we added a state of art course delivery system called "Moodle". Moodle

stands for (Modular Object Oriented Dynamic Learning Environment. It has become LBU's on-line community and course delivery system. LBU also offers E-Campus. E-Campus allows students to view and participate in live on-campus classes via the internet. If you are interested in this method of study, please mention this program when requesting an evaluation.

ON-LINE CATALOG AND APPLICATION

Louisiana Baptist University's current catalog may be viewed on the Internet. Students desiring additional enrollment information should e-mail the university at: info@lbu.edu and request an evaluation packet. Be sure to give your name and correct mailing address. While preliminary information may be sent electronically, the student must file traditional enrollment forms and certified transcripts before enrollment. LBU's Web Site: <http://www.lbu.edu>

E-MAIL COMMUNICATIONS

Louisiana Baptist University faculty members are as close as your computer. Students experiencing problems or simply needing special instructions in a given area may contact LBU offices by sending your e-mail questions to: lbuinto@lbu.edu

FINANCIAL INFORMATION

TUITION AND FEES

Enrollment Fee.....	\$125.00
Tuition Per Semester hour	Undergraduate- Associates and Bachelors \$110.00 Graduate- Master's \$120.00 and Doctorate \$130.00
Change of Program.....	\$50.00
Technology Fee	\$225.00
Course Delivery Fee.....	\$150.00
International Postage Fee	\$250.00
Graduation Fee.....	\$185.00
Advanced Placement Tests	\$100.00 (each)
Transcript Fee.....	\$ 10.00 (each)
Transfer Credit	No Charge
Non-traditional Credit Approved	No Charge

Financial arrangements for payment plans can be made through the Financial Office. Most students are required to pay a minimum \$200.00 down payment with the balance payable at \$100.00 per month. **Note that textbooks and graduation fees are not included in the tuition costs.** A prepay discount of **25% given to** those who remit their tuition in full at the time of enrollment. Any accounts over 30 days delinquent are subject to a 10% late fee for the delinquent amount.

Even after completing all academic and other requirements for your degree, including a thesis or dissertation, a degree candidate must have fully paid all tuition,

fees and all other charges due to LBU before participating in the commencement exercises, receiving a diploma, or receiving a transcript from the institution.

REFUNDS

When a program is dropped or withdrawn the following refund policy will apply:

1. No refund will be made of the enrollment fee, technology fee or postage fee.
2. Refund of tuition is as follows:
 - a. From 21-30 days from enrollment, 80%
 - b. From 31-60 days from enrollment, 60%
 - c. From 61-90 days from enrollment, 40%
 - d. After 91 days from enrollment, 0%
3. A student must notify the University in writing of the intention to withdraw. The withdrawal date will be the date the notification is received by Louisiana Baptist University, and this date will be used in calculating the amount of tuition refunded.

FINANCIAL AID

Louisiana Baptist University does not participate in the Basic Educational Opportunity Grant program, or other federally-funded financial assistance programs. The University does not accept financial assistance payments from federally funded programs such as Vocational Rehabilitation Services or the Social Security Administration.

SCHOLARSHIP POLICY

The University is not underwritten by any government or private agency; therefore, Louisiana Baptist University at present offers only limited scholarship programs. Non-funded scholarships would necessitate increased tuition cost to all other students.

However, the university does offer two specialized scholarships:

100 GIVING a \$100 SCHOLARSHIP – Churches that commit to supporting the university for \$100.00 a month are issued an annual \$1,000 scholarship that can be given to a person of their choosing. For more details, please contact the university office.

FRIENDSHIP SCHOLARSHIP – When enrolled students recruit other friends or family into the university \$100.00 will be applied toward the tuition of the enrolled student and the new student will receive a \$100.00 tuition discount.

NON DEGREE PROGRAMS CERTIFICATE PROGRAM

Louisiana Baptist University offers a certificate program of study in several areas of interest. These programs are designed for persons who are interested in receiving a foundational education in a selected area of instruction without necessarily pursuing a degree in that field of study.

The program requires five courses packaged together. Students completing the program will receive a certificate of completion and will be credited with fifteen credit hours of college work. Students who are enrolled in the degree program may incorporate a certificate program into their degree provided other criteria listed in this catalog are met.

DIPLOMA PROGRAM

The diploma program is a ninety-eight (98) semester hour program of studies available to mature students. Due to the academic standards and goals of this program, those applying must be active in some form of Christian ministry and be a minimum of thirty (30) years of age.

This program is tailored to the needs of active Christians who have spent years in ministry and the study of the Scriptures, but have not completed any structured program of studies beyond high school. Once completed, the diploma program can serve as the foundation for the student to pursue a Bachelor's degree.

DEGREE PROGRAMS GENERAL INFORMATION

Louisiana Baptist University, in its external study programs, offers both undergraduate and graduate degrees. **Students who transfer credits from other postsecondary institutions are required to complete a minimum of thirty credit hours through this institution in order to qualify for graduation from any of its degree programs.** These degree programs are described below.

BACHELOR DEGREES

The Bachelor of Arts degree program is primarily designed for the student who has previously earned a substantial number of college credits at the undergraduate level and who has the maturity to pursue an external studies program.

Louisiana Baptist University offers an appropriate number of quality undergraduate courses so that the beginning student may earn a full four years of college credit by external study. However, students with little college work are usually not considered for external studies and are encouraged to enroll in the on-campus programs of LBU or another reputable college or university to acquire their core curriculum.

Students who have completed sixty-four semester hours of course work with a minimum of thirty semester hours completed through Louisiana Baptist University may apply for an Associate diploma provided they have met the criteria listed in this publication. A Bachelors of Arts degree requires a total of one hundred twenty-eight semester credit hours (128 SCH).

MASTERS DEGREES

The Master of Arts degree program in Biblical Studies, Christian Communication, Psychology and Christian Counseling, and Christian Education is primarily designed for the mature professional who seeks to further his or her education without the need to return to the traditional college classroom environment. The program allows you to continue working toward a degree while maintaining your professional career.

The program has the flexibility of combining professional development courses, workshops and seminars such as those offered by an employer with other academic course requirements. This allows you to optimize the use of your time for both your education and your profession.

LBU offers the degrees of Master of Ministry, and Master of Divinity through the Seminary Division.

The admission requirements for both the undergraduate and graduate programs are based upon the criteria of the institution. Admission is further based on individual approval.

DOCTOR OF PHILOSOPHY DEGREE

The Louisiana Baptist University doctoral programs lead to the degrees of Doctor of Philosophy in Biblical Studies, Psychology and Christian Counseling, Christian Education, and Christian Leadership. Your individual program of study will be developed from a core of required courses based on your own personal and professional goals.

The external studies program requires that your plan of study be developed specifically for you within the overall academic requirements of the institution. Your faculty advisor is closely involved in the formulation, planning and development of your program of study and research. The faculty is committed to your achievement of excellence in course work and in your professional development.

The Doctor of Philosophy programs utilize prepared courses in the field of study in combination with extensive research projects and cooperative education learning experiences. In this manner, your program provides you with an

opportunity to strengthen your skills and knowledge in your chosen field and at the same time to make a contribution to the advancement of knowledge. This is accomplished by allowing you to use your unique expertise on a contemporary problem of interest to you and other professionals in your field of study within the context of graduate study. The faculty of LBU believes that this program offers a valuable opportunity for intellectual growth and development to the mature professional.

CANDIDACY

A graduate student is required to maintain a 3.00 grade-point average (based on a 4.00 scale) while completing his/her graduate studies. A student may not consider themselves a candidate for a doctoral degree until he/she has demonstrated this academic ability through completed course work and received approval from their faculty advisor.

DISSERTATION

Every candidate for a doctoral degree is required to prepare and present a dissertation that shows competent independent investigation of a subject area and is acceptable in form and content to the student's faculty advisor. It is necessary that the work be of publishable quality. The dissertation must exhibit originality and thoroughness of research and must be an exhaustive treatment of the subject chosen. The form of the dissertation must be approved by the faculty advisor. In addition, the graduate student must present his research in an acceptable and correct grammatical style. Mere technical form is not enough; the material should reflect the high quality of research and knowledge expected of a Doctor of Philosophy degree candidate.

Graduating Class





B

School of
Biblical Studies



David Keeny
Dean of Bible

SCHOOL OF BIBLICAL STUDIES

The School of Biblical Studies is central to the mission and purpose of Louisiana Baptist University. It provides quality education for future pastors, counselors, evangelists, missionaries, and other Christian workers as well as individuals pursuing careers in business, education, and the arts and sciences.

The School of Biblical Studies contributes to the overall goals of LBU and provides the nucleus around which all other programs revolve. Its influence is realized throughout our institution as it adds to the distinctive Christian atmosphere.

A specific degree in Biblical Studies seeks:

1. To provide you with learning experiences needed to equip you for the finest service to God and your fellow man.
2. To provide you with a well-balanced general education as well as the opportunity for detailed study leading to a Bible major.
3. To provide you with an opportunity to study and learn the doctrines and practices of New Testament Christianity.
4. To provide you with the knowledge which will enhance your understanding of the sovereignty of God in your life, the redeeming power of Jesus Christ, and the purpose of your service to God and to humanity.
5. To aid you in the development of a Christian philosophy of life and to assist you in developing Christian standards of moral and ethical conduct.
6. To assist you in finding your purpose in God's plan whether you seek to be a pastor, missionary or dedicated layperson.

BIBLICAL STUDIES DEGREES

Upon its founding the institution was primarily a Bible school, the essential goal of which was to teach ministers and other Christian workers how to understand the Word of God (Holy Scripture) and to serve God and mankind effectively. Over the past decades LBU has expanded its curricular offerings to include education, counseling, music and communications.

Using the finest materials available from the leading conservative authors, we are constantly improving our curriculum to meet your needs. If you are a minister or a Christian layperson, you can pursue your chosen course of study in either the on-campus or the external studies program. You should know that many of this nation's most successful and respected ministers and Christian educators hold degrees from Louisiana Baptist University. Louisiana Baptist University School of Biblical Studies offers the following areas of concentration:

PASTORAL MINISTRIES

The purpose of this area of concentration is to prepare the student professionally for the duties as a pastor, administrator, and Bible expositor. The administrative duties of the pastor, his role as the leader of public worship, developing of skills in preaching, leadership in the local congregation, his role in the community, and other subjects will be considered. Special emphasis will be given to evangelism, discipleship, and church growth.

GENERAL MINISTRIES

This area of concentration is especially designed for those who desire to serve the church in education or administrative positions. Like other concentrations in the School of Biblical Studies, this degree is based upon a solid biblical foundation with additional emphasis on teaching and administration. Areas of organization, administration of the educational ministries of a church, church and personal finances, as well as teaching strategies will be included in the curriculum.

MISSIONS

Believing that evangelism and missionary outreach is central to the purpose for the very existence of the Lord's churches, Louisiana Baptist University has always placed a strong emphasis on training and equipping those who will serve as the next generation of missionaries. The missions concentration is especially designed to prepare those planning to serve as missionaries in their local community or in a foreign culture. The program seeks to impart practical, biblically based training which will inspire, equip, and orient the student for a successful ministry.

EDUCATIONAL MINISTRIES

The new department of Educational Ministries is designed for the person who feels called into any educational ministry such as Preschool/Children, Youth, Singles, Sr. Adults or Minister of Education. This degree will also open up avenues for the laity such as Sunday School leadership, Vacation Bible School workers, mission leaders, AWANA leaders, and other church leadership to improve their biblical teaching skills or even prepare themselves for new areas of service. Our Educational Ministries classes will also open up various administrative offerings for students called into the pastoral ministries.

ALTERNATIVE CONCENTRATIONS

Individually tailored concentrations which will meet the needs of the student (Ex: Student Ministries, Evangelism, Theology, Apologetics, Advanced Prophecy, and Educational Ministries, etc.) may be designed in consultation with an Academic Advisor. Contact the Dean of the School of Biblical Studies for further information and options.

BACHELOR OF ARTS IN BIBLICAL STUDIES

The program leading to the Bachelor of Arts in Biblical Studies requires one hundred twenty-eight semester credit hours (128SCH) of academic work.

Courses may be taken in any order and some substitutions may be possible. These are suggested guides for your degree program. A minor may be earned when a minimum of fifteen (15) semester credit hours are earned in a particular area of study. Consult your academic advisor regarding any questions you may have.



BACHELOR OF ARTS IN BIBLICAL STUDIES

Four Year Program – Bible & Theology Concentration

Recommended for the student that is interested in more Bible and theological study; especially as preparation toward a master's degree in Biblical Studies or Divinity.

Area	Semester Hours
General Education Requirements	32
Orientation	2
English	12
English Composition I	(3)
English Composition II.....	(3)
American Literature.....	(3)
English Literature/Speech	(3)
History	6
U.S. History I.....	(3)
U.S. History II	(3)
Math/Science	6
Social Studies	6
Bible Requirements.....	30
Old Testament Survey.....	(3)
New Testament Survey	(3)
Personal Evangelism.....	(3)
The Four Gospels.....	(3)
The Text Behind Your Bible	(3)
Apologetics	(3)
Acts of the Apostles.....	(3)
Introduction to the Revelation	(3)
Hermeneutics	(3)
Introduction to Missions.....	(3)
Bible & Theology Concentration Requirements	24
Applied Research Project	(3)
Theology/Bibliology	(3)
Christology/Pneumatology	(3)
Antropology/Hamartiology	(3)
Ecclesiology/Soteriology.....	(3)
Angelology/Eschatology	(3)
Introduction to Biblical Languages.....	(3)
Historical Books.....	(3)
Graduation Workshop	3
Electives	39
TOTAL	128

BACHELOR OF ARTS IN BIBLICAL STUDIES

Four Year Program – Pastoral Ministries Concentration

Recommended for the student that has interest/calling to the role of senior pastor, student pastor, or children's pastor.

Area	Semester Hours
General Education Requirements	32
Orientation	2
English	12
English Composition I	(3)
English Composition II.....	(3)
American Literature.....	(3)
Beginning Homiletics.....	(3)
History	6
U.S. History I.....	(3)
U.S. History II	(3)
Math/Science	6
Social Studies	6
Bible Requirements.....	30
Old Testament Survey.....	(3)
New Testament Survey	(3)
Personal Evangelism.....	(3)
The Four Gospels.....	(3)
The Text Behind Your Bible	(3)
Apologetics	(3)
Acts of the Apostles.....	(3)
Introduction to the Revelation	(3)
Hermeneutics	(3)
Introduction to Missions.....	(3)
Pastoral Ministries Requirements	24
Pastorology.....	(3)
Church Administration	(3)
Sunday School Administration.....	(3)
Biblical Counseling	(3)
The Disciple Making Pastor.....	(3)
Baptist Heritage	(3)
Church & Personal Finance	(3)
Introduction to Biblical Languages.....	(3)
Graduation Workshop	3
Electives	39
TOTAL	128

BACHELOR OF ARTS IN BIBLICAL STUDIES

Four Year Program – Missions Concentration

Recommended for the student that has interest/calling to foreign and/or domestic missions.

Area	Semester Hours
General Education Requirements	32
Orientation	2
English	12
English Composition I	(3)
English Composition II.....	(3)
American Literature.....	(3)
English Literature/Speech	(3)
History	6
U.S. History I.....	(3)
U.S. History II	(3)
Math/Science	6
Social Studies	6
Bible Requirements.....	30
Old Testament Survey	(3)
New Testament Survey	(3)
Personal Evangelism.....	(3)
The Four Gospels.....	(3)
The Text Behind Your Bible	(3)
Apologetics	(3)
Acts of the Apostles.....	(3)
Introduction to the Revelation	(3)
Hermeneutics	(3)
Introduction to Missions.....	(3)
Missions Concentration Requirements	24
Beginning Homiletics or	(3)
Communicating the Gospel	
General Missions.....	(3)
World Missions	(3)
Focusing on Missions	(3)
Missionary Adjustments	(3)
Church Planting.....	(3)
Missions Anthropology.....	(3)
Evangelistic Song Leading	(3)
Graduation Workshop	3
Electives	39

TOTAL

128

BACHELOR OF ARTS IN BIBLICAL STUDIES

Four Year Program – Pastoral Counseling Concentration

Recommended for the student that their interest/calling in ministry involves direct experience in counseling as a church staff member, chaplain, or layperson and wants their transcript to show Biblical Studies major with Pastoral Counseling concentration. (B.A. in Counseling is another suggested option)

Area	Semester Hours
General Education Requirements	32
Orientation	2
English	12
English Composition I	(3)
English Composition II.....	(3)
American Literature.....	(3)
English Literature/Speech	(3)
History	6
U.S. History I.....	(3)
U.S. History II.....	(3)
Math/Science	6
Social Studies	6
Bible Requirements.....	30
Old Testament Survey.....	(3)
New Testament Survey	(3)
Personal Evangelism.....	(3)
The Four Gospels.....	(3)
The Text Behind Your Bible	(3)
Apologetics	(3)
Acts of the Apostles.....	(3)
Introduction to the Revelation	(3)
Hermeneutics	(3)
Introduction to Missions.....	(3)
Pastoral Counseling Concentration Requirements	24
Introduction to Psychology	(3)
Innovative Approaches to Counseling	(3)
Biblical Counseling for Every Christian.....	(3)
Spirit-Controlled Temperament.....	(3)
Counseling the Depressed.....	(3)
Counseling for Family Violence and Abuse (3)	
Counseling and Divorce	(3)
Marriage and Family Counseling.....	(3)
Graduation Workshop	3
Electives	39
TOTAL	128

MASTER OF ARTS IN BIBLICAL STUDIES

If you have an undergraduate degree and appropriate academic preparation in Biblical Studies, as determined by your faculty advisor, you may wish to pursue the Master of Arts in Biblical Studies program. As with all graduate study programs you must, however, meet the individual approval of the Admission Office.

You must complete a minimum of thirty semester credit hours (30SCH) of course work. The Masters program requires thirty semester hours (30SCH) of course work and the completion of a thesis for six semester hours (6SCH). You may, however, complete one additional course and a twenty-five (25) page writing project in place of the thesis for a total of thirty-six semester credit hours (36SCH) at the graduate level.

The specific course selections for the concentration of studies for your degree program will be established in conference with your academic advisor.

General Bible Concentration

Prerequisites: Candidates for the program must have at least a Bachelor's Degree of 128 hours from an institution recognized by Louisiana Baptist University.

	Hours
BIB500 The Tabernacle or BIB513 The Revelation	3
BIB501 Historical Books or BIB502 Poetical Books	3
BIB504 Major Prophets or BIB505 Minor Prophets	3
BIB506 Life of Paul I	3
BIB507 Life of Paul II or Bible Elective	3
BIB509 Romans I or Bible Elective	3
BIB510 Romans II or Bible Elective	3
Experiential Credit or Transfer Credit.....	0-6
Master's Thesis	6
Graduation Workshop	3
Total Hours in the Program	36

MASTER OF ARTS IN BIBLICAL STUDIES

General Studies Concentration

Prerequisites: Candidates for the program must have at least a Bachelor's Degree of 128 hours from an institution recognized by Louisiana Baptist University.

	Hours
BIB517 Baptist Church History or Bible Elective	3
BIB525 Current Trends and Prophecy or Bible Elective	3
BIB526 Becoming Conversant w/Emergent Church or Bible Elective	3
BIB545 Pastoral Workshop or Bible Elective	3
BIB520 Introduction to Theology or Bible Elective	3
BIB531 Greek I or Bible Elective	3
BIB543 Hebrew I or Bible Elective	3
Experiential Credit or Transfer Credit	0-6
Master's Thesis	6
Graduation Workshop	3
Total Hours in the Program	36

MASTER OF ARTS IN BIBLICAL STUDIES

Apologetics Concentration

Prerequisites: Candidates for the program must have at least a Bachelor's Degree of 128 hours from an institution recognized by Louisiana Baptist University.

	Hours
BIB528 Christian Worldview and Apologetics	3
BIB529 Making the Case for Christ	3
BIB650 Christian Apologetics	3
BIB565 Readings in Biblical Studies (Apologetics Area)	3
BIB527 Apologetics and the New Generation	3
BIB531 Greek I or Bible Elective	3
BIB532 Greek II or Bible Elective	3
Life Experiential Credit or Transfer Credit	0-6
Master's Thesis	6
Graduation Workshop	3
Total Hours in the Program	36

DOCTOR OF PHILOSOPHY IN BIBLICAL STUDIES

The Ph.D. is the highest academic degree that can be earned at the institution. Therefore, the University demands an excellence in scholarship, including the ability to do effective independent research. Because of the nature of a Ph.D. program, it is recommended that no more than half of the required course work be achieved through structured class work. Courses may be selected from the 600 and higher level of Biblical Studies listed in this catalog. Other courses should include research projects that fall within the parameters of this field of study. The program culminates in an original work representing a significant contribution in their field of study.

The person admitted to our Ph.D. program must have the appropriate academic background as well as the initiative, self-discipline, and research skills necessary to succeed in such a program.

DOCTOR OF PHILOSOPHY IN BIBLICAL STUDIES
General Bible Concentration

Prerequisites: Candidates for the program must have at least a Master’s Degree of 36 hours from an institution recognized by Louisiana Baptist University.

	Hours
BIB620 Christian Philosophy	3
BIB610 Life in Bible Times or BIB770 Bible Lands Research	3
BIB650 Christian Apologetics or Theology elective	3
BIB765 Readings in Biblical Studies or Bible elective	3
BIB543 Hebrew I or Bible Elective	3
BIB531 Greek I or Bible Elective	3
Bible Elective, Applied Research Topic or Workshop/Modular.....	3
Bible Elective, Applied Research Topic or Workshop/Modular.....	3
Bible Elective, Applied Research Topic or Workshop/Modular.....	3
Experiencial Credit or Transfer Credit	0-15
Doctoral Dissertation	15
Graduation Workshop.....	3
Total Hours in the Program	60

DOCTOR OF PHILOSOPHY IN BIBLICAL STUDIES

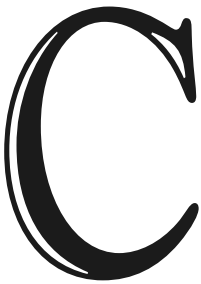
Old Testament Concentration

	Hours
BIB620 Christian Philosophy	3
BIB725 Archaeology of the Ancient Near East	3
BIB610 Life in Bible Times or BIB770 Bible Lands Research	3
BIB650 Christian Apologetics or Theology elective	3
BIB765 Readings in Biblical Studies (Old Testament Area)...	3
BIB543 Hebrew I	3
BIB544 Hebrew II	3
Bible Elective	3
Bible Elective	3
Experiential Credit or Transfer Credit	0-15
Doctoral Dissertation	15
Graduation Workshop	3
Total Hours in the Program	60

DOCTOR OF PHILOSOPHY IN BIBLICAL STUDIES

New Testament Concentration

	Hours
BIB620 Christian Philosophy	3
BIB621 Advanced Studies in John	3
BIB750 Advanced Studies in Acts	3
BIB650 Christian Apologetics or Theology elective	3
BIB765 Readings in Biblical Studies (New Testament Area) 3	3
BIB531 Greek I	3
BIB532 Greek II.....	3
Bible Elective.	3
Bible Elective	3
Experiential Credit or Transfer Credit	0-15
Doctoral Dissertation	15
Graduation Workshop	3
Total Hours in the Program	60



School of Christian Communications

SCHOOL OF CHRISTIAN COMMUNICATIONS

The purpose of the School of Christian Communication is to train students to be effective communicators, especially of the word of God. Our communications program is founded on a sound education in the Liberal Arts, because people working in all areas of communication require a broad understanding of society and the forces that affect it. We feel that communications is an excellent field for those with Christian convictions and moral integrity. Christian marketing and consulting firms are becoming one of the nation's fastest grown fields. Other fields include association and nonprofit organization management, sales and sales management, and numerous careers, which are based on the organization, management, and communication of information.

Most courses require practical, hands-on projects in a professional environment in addition to regular academic course requirements. If this is your professional goal, you are invited to become a part of this exciting and challenging program.

Louisiana Baptist University School of Christian Communications offers areas of concentration in speech, journalism, marketing, management, music, and leadership.

CONCENTRATIONS

SPEECH/JOURNALISM

For centuries speech has played a strong role in traditional academic curriculum. The role of the speech division of the Communications Department is to enhance the student's verbal skills. Regardless of a person's occupation or profession, speech training enhances any area of study. By developing oral communication skills the student greatly enhances their overall possibility of success.

LBU offers a wide variety of writing courses beginning with English Composition. All students regardless of their major are issued a "Guidelines for Writing Assignments" at the time of enrollment. This specially prepared manual covers all types of writing assignments from a basic composition to doctoral dissertations. Speech and writing majors will study journalism, technical writing, creative Christian writing, and how to write Christian fiction.

MARKETING/MANAGEMENT

In a market-driven economy, marketing is the lifeblood of business. The marketing concentration gives students a solid foundation in sound academic and Christian principles to prepare for a career in the competitive market place.

A management concentration provides a general, diversified background for students who plan to work in a non-profit organization, operate a business or enter into some related field of management.

Those considering owning their own business someday should consider a major in marketing and management to expose them to all the core skills necessary to succeed as a Christian business person.

MUSIC

This institution offers a Bachelor and Masters of Arts degree in sacred music. All work may be completed off campus by using course syllabi and DVDs. This gives the church choir director or musician the opportunity to complete his/her music education while continuing to serve at his/her local church.

Churches can use this method to train people within the congregation to fill leadership positions in their music department. Through the use of videos, textbooks and carefully designed workbooks, churches can train dedicated members with some basic music abilities to serve as choir directors, musicians, and special singing groups.

All videos are prepared by outstanding music professionals. Familiar songs are used so that the student can practice the same songs they will use in worship service.

Professional musicians can complete their degree while they travel. Experiential credit will be issued to professionals in the music field for knowledge gained by performance. Degrees may be obtained in music with a double major in Communication, Bible, Counseling, or Christian Education.



LEADERSHIP/MANAGEMENT

With the growth of non-profit associations and faith based organizations new opportunities are opening up for those persons that have a degree in Christian Communications with special emphasis on leadership and management. Christian media and consulting firms are becoming one of the nation's fastest growing fields. Many new opportunities are also opening up in advertising, public relations, and a variety of other areas that require the management and leadership skills taught at LBU. The program helps the student develop the most advanced techniques in a decision making and learn the necessary research skills that accompany high-level responsibility.

The department focuses first on leadership, realizing that leadership is a key ingredient of success whether it is in the pulpit, classroom, or a corporate office. Materials from such outstanding Christian writers as John Maxwell, Ed Young, and Greg Morris expose the student to the latest techniques in leadership

In every field, whether it is secular or religious, there is a demand for leadership. In business and industry dynamic leadership is much sought after and well compensated. Today's increasing demands on church and ministry leaders make the development of leaders critical to the continued growth of the ministry.

Dr. Weaver, Dr. Crook, & Louisiana Governor Bobby Jindal



BACHELOR OF ARTS IN CHRISTIAN COMMUNICATION

Four Year Program

Area	Semester Hours
General Education Requirements	32
Orientation	2
English	12
English Composition I	(3)
English Composition II.....	(3)
American Literature.....	(3)
Public Speech/English Lit.	(3)
History	6
U.S. History I.....	(3)
U.S. History II	(3)
Math/Science Electives	6
Social Studies Electives.....	6
Communication Requirements.....	30
Communicating the Gospel	(3)
Anointed for Business.....	(3)
Financial Management	(3)
Marketing Communications.....	(6)
Human Relations in Management	(3)
Ten Principles of Success	(3)
Communications Electives.....	(9)
Bible Requirements	24
Old Testament Survey	(3)
New Testament Survey.....	(3)
Methods of Bible Study	(3)
The Four Gospels.....	(3)
Apologetics.....	(3)
Introduction to the Revelation.....	(3)
Hermeneutics.....	(3)
Baptist Church Heritage.....	(3)
Electives Related to Major	15
Graduation Workshop.....	3
Electives.....	24
TOTAL	128

BACHELOR OF ARTS IN SACRED MUSIC

Four Year Program

Area	Semester Hours
General Education Requirements	32
Orientation	2
English	12
English Composition I	(3)
English Composition II.....	(3)
American Literature.....	(3)
Public Speech/English Lit.	(3)
History	6
U.S. History I.....	(3)
U.S. History II.....	(3)
Math/Science Electives	6
Social Studies Electives.....	6
Music Requirements.....	30
Music Theory I.....	(3)
Music Theory II.....	(3)
Music Theory III	(3)
Hymnology.....	(3)
Singers Tool Kit.....	(3)
Instrumental Conductors Tool Kit.....	(3)
Choral Conductors Tool Kit.....	(3)
Music Electives	(9)
Bible Requirements	24
Old Testament Survey.....	(3)
New Testament Survey	(3)
Methods of Bible Study.....	(3)
The Four Gospels.....	(3)
Apologetics	(3)
Introduction to the Revelation	(3)
Hermeneutics	(3)
Baptist Church Heritage.....	(3)
Electives Related to Major	15
Graduation Workshop.....	3
Electives.....	24
TOTAL	128

CENTER FOR CHRISTIAN LEADERSHIP

In every field, whether it is secular or religious, there is a demand for leadership. In business and industry dynamic leadership is much sought after and well compensated. Today’s increasing demands on church and ministry leaders make the development of leaders critical to the continued growth of the ministry.

MASTER OF ARTS IN CHRISTIAN LEADERSHIP RECOMMENDED CURRICULUM

CLC505	Principles Centered Leadership	3
CLC520	Journalism Practicum	3
CLC526	Teams in Organization	3
CLC542	Biblical Requirements of Greater Leadership.....	3
CLC546	Laws of Leadership.....	3
CLC551	Applied Research.....	3
CLC553	Entreleadership.....	3
CLC555	Reading in Leadership.....	3
CLC560	Practicum in Leadership	3
WKSP	Graduation Workshop.....	3
CLC599	Thesis.....	6

DOCTOR OF PHILOSOPHY IN CHRISTIAN LEADERSHIP

This program is offered to fill the need of the many students an practitioners of leadership that are seeking graduate level training in leadership. In keeping with the policy of many of the nation’s leading research universities, much of the Ph.D. in Christian Leadership is research based. Believing that individual research and development is a major component in graduate education. At least 50% of the student’s workload comes from Applied Research and Readings in Leadership. The curriculum incorporates case studies, personal discussions, web- based research and field work to promote entrepreneurial leadership in a changing global environment. Practicums also play an important role in this comprehensive program. Practicums are centered around the student’s professional experiences.

The doctoral program culminates with the completion of a professional written book of publishable quality. This replaces the traditional dissertation required in our other graduate programs.

DOCTOR OF PHILOSOPHY IN CHRISTIAN LEADERSHIP RECOMMENDED CURRICULUM

CLC600	Master Plan for Leaders.....	3
CLC602	Social Epidemiology	3
CLC605	Leadership Credibility.....	3
CLC615	Spiritual Ethics	3
CLC610	The 360 Leader	3
CLC618	Entrepreneurship.....	3
CLC630	Leading Through Conflict.....	3
CLC636	Creative Church Leadership	3
CLC700	Research in Leadership	3
WKSP	Graduation Workshop.....	3
CLC799	Dissertation/Book Project	15

The program requires an additional 15 credits of professional experience or approved practicums. Appropriate transfer credit is accepted into the program. Graduates must complete at least 30 hours through LBU.

It is recommended that the student take the five printed core courses and five research and development courses. Students that wish to replace one or more of the core subjects may do so with the approval of their faculty advisor.

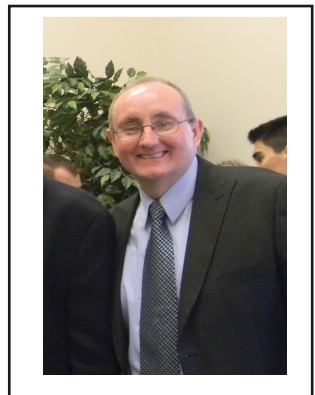
Associate Vice-President, Dr. Mark Crook





C School of Christian Counseling

Dr. Mark Crook
Dean



SCHOOL OF CHRISTIAN COUNSELING

The School of Christian Counseling's program is designed to train ministers, therapists, and lay persons in effective Christian Biblical Counseling. The need for Christian Biblical counseling in churches, schools, and Christian counseling centers is in great demand. The program is designed to equip counselors with recognized techniques and methods for counseling with psychologically and emotionally dysfunctional individuals. The program also emphasizes the wise use of spiritual/religious principles, prayer, relational and inner healing. Special importance is given to the use of spiritual/religious principles in the application of counseling therapies. Many Licensed Professional Counselors have felt the need to expand their training to include Christian Biblical Counseling.

The counseling department offers certificate programs for those who are interested in receiving foundational education in a selected area of instruction without pursuing a degree in the field of study. Each certificate program contains five courses; the selected areas of instruction include Basic Christian Counseling and Marriage and Family Counseling.

It is not a program in professional psychology and is not appropriate for those seeking licensure to practice psychology.

The Psychology and Christian Counseling degree program offers Bachelor of Arts, Master of Arts, and Doctor of Philosophy degree programs. The characteristics and requirements for each of these programs are explained in the following sections.

BACHELOR OF ARTS IN CHRISTIAN COUNSELING

Four Year Program

Area	Semester Hours
General Education Requirements	32
Orientation	2
English	12
English Composition I	(3)
English Composition II.....	(3)
American Literature.....	(3)
Public Speech/English Lit.	(3)
History	6
U.S. History I.....	(3)
U.S. History II.....	(3)
Math/Science Electives	6
Social Studies Electives.....	6
Counseling Requirements.....	33
Introduction to Psychology	(3)
Inn. Approaches to Counseling I	(3)
Inn. Approaches to Counseling II	(3)
Self-Talk, Imagery & Prayer	(3)
Biblical Counseling for Christians	(3)
Counseling the Depressed	(3)
Counseling for Violence & Abuse	(3)
Counseling and Guilt	(3)
Spirit Controlled Temperament	(3)
Soul Talk	(3)
Coun. for Depression & Suicide	
In Children & Adolescents	(3)
Bible Requirements	24
Old Testament Survey	(3)
New Testament Survey	(3)
Methods of Bible Study.....	(3)
The Four Gospels.....	(3)
Apologetics	(3)
Introduction to the Revelation	(3)
Hermeneutics	(3)
Ecclesiology/Soteriology.....	(3)
Electives Related to Major	15
Graduation Workshop.....	3
Electives.....	21

TOTAL

128

MASTER OF ARTS IN CHRISTIAN COUNSELING

If you have sufficient preparation in psychology and Christian counseling as determined by your faculty advisor, you may wish to pursue the Master of Arts in Psychology and Christian Counseling degree program. As with all graduate study programs you must, however, meet the individual approval of the Admissions Office.

This program requires that you already possess an undergraduate degree in a related field of study. You must complete a minimum of thirty semester credit hours (30 SCH) of course work. You must also complete a thesis for which you receive six semester credit hours (6 SCH). You may, however, complete one additional course and a twenty-five (25) page writing project in place of the thesis for a total of thirty-six semester credit hours (36SCH) at the graduate level.

Counseling Course Sequence (choose 10 of the following)	30
PCC500 Attention Deficit Disorder.....	3
PCC504 Group Counseling	3
PCC508 Essentials of Cognitive Assessment.....	3
PCC511 Cou. for Unplanned Preg. & Infertility.....	3
PCC512 Cou. for Problems of Self-Control	3
PCC513 Cou. For Substance Abuse & Addiction.....	3
PCC514 Counseling & Self-Esteem	3
PCC515 Ethnicity, Families and Counseling.....	3
PCC517 Counseling for Anger	3
PCC518 Cou. Spiritually Dysfunctional	3
PCC519 Counseling and Divorce	3
PCC520 Marriage and Family Counseling.....	3
PCC525 Human Development.....	3
PCC526 Readings in Current Cou. Trends	3
PCC528 Psychotherapy I	3
PCC529 Psychotherapy II.....	3
PCC534 Counseling in Times of Crisis	3
PCC535 Adolescent Psychology	3
PCC540 Career Counseling.....	3
PCC587 Practicum in Counseling.....	3
PCC589 Writing Project.....	3
PCC590-598 Cooperative Education	3
PCC599 Thesis (Required)	6
WKSP Graduation Workshop	3

TOTAL

36

**The thesis topic must be approved by your Academic Advisor and the thesis must be completed in accordance with the guidelines of the institution.*

DOCTOR OF PHILOSOPHY IN CHRISTIAN COUNSELING

The Ph.D. is the highest academic degree that can be earned at the institution. Therefore, the University demands an excellence in scholarship which includes the ability to execute effective independent research. Because of the nature of a Ph.D. Program, no more than thirty semester hours of credit should be achieved through structured class work. Structured courses will be selected from the 600 and 700 series of counseling courses.

All other courses must be approved research projects, practicums or cooperative education experiences that fall within the parameters of the field of study. The program culminates in an original work representing a significant contribution in their field of study.

The self-directed portion of the program promotes personal growth through independent research and a wide variety of learning initiatives offered in the program, including directed research projects, approved readings, carefully monitored practicums and cooperative learning experiences.

The person admitted to our Ph.D. program must have the appropriate academic background and the initiative, self-discipline and the research skills necessary to succeed in such a program.

Counseling Recommended Course Sequence	30
PCC610 Study of Nouthetic Counseling I.....	3
PCC611 Study of Nouthetic Counseling II	3
PCC621 Cou. The Sick & Terminally Ill	3
PCC622 Cou. Adult Children of Alcoholics	3
PCC623 Counseling and Children	3
PCC624 Counseling Before Marriage	3
PCC625 Counseling and Homosexuality.....	3
PCC630 Conflict Management & Counseling	3
PCC631 Sexual Ethics in Counseling	3
PCC632 Biblical Counseling Therapies	3
Self-Directed Studies	15
PCC701-704 Applied Research	3
PCC705 Readings in Christian Counseling	3
PCC710 Practicum in Christian Counseling	3
PCC790-798 Cooperative Education	3
PCC 799 Dissertation (Required).....	15

TOTAL

60

PROFESSIONAL DEVELOPMENT ORGANIZATIONS

Louisiana Baptist University recommends that graduate students pursue membership in professional counseling organizations. Graduating students may obtain membership in the American Association of Christian Counselors, as well as other organizations.

Alumni Breakfast





E

School of Christian Education

Dr. Linda Adams
Dean



SCHOOL OF CHRISTIAN EDUCATION

The primary purpose of the Christian Education degrees is to prepare you for service in elementary or secondary private and Christian schools (public schools normally require degrees from regionally accredited universities). The curriculum is designed to equip you for professional careers in education such as teaching, administration, and supervision.

As a candidate for a degree in the School of Christian Education, you will accrue a knowledge of God and the Bible and obtain a well-balanced liberal arts education by the successful completion of the required semester credit hours for general education. You will also demonstrate mastery of the knowledge and skills of teaching and evaluation techniques through successful completion of the required professional education courses. This program is designed not only for new students but also to assist those who are already working as Christian school teachers, teacher's aides, learning-center monitors or related roles. Along with academic curriculum are task-related courses that incorporate the actual duties which the student performs on the job. A school administrator may serve as an advisor/supervisor to the student.

By turning professional experiences into credit, students can earn actual "on the job" credit while they are completing their academic courses. Much of this professional credit is tuition free so that students not only speed up their degree completion, but can also save a substantial amount of tuition.

These task-related courses (such as student teaching) incorporate actual duties performed on the job with the school administrator serving as advisor and/or supervisor. LBU not only recognizes on-the-job training, but will also consider credit from seminars offered by ACE, Abeka, Alpha Omega, ACSI or other professional educational organizations.

All students must complete a minimum of 30 academic credits through LBU in order to graduate.

BACHELOR OF ARTS IN CHRISTIAN EDUCATION

The degree requires course work which can include academic specialization in elementary or secondary school teaching. Education majors are exposed to the best possible curriculum, methods and hands-on experience through student teaching.

At the center of the LBU education program is the knowledge that all truth and wisdom come from God. Students are made aware of the philosophical differences in Christian-based education and the humanistic philosophy and techniques used in progressive education. Students that need more immediate verification of education may request an Associate degree when they have com-

pleted at least sixty-five (65SCH) semester hours of credit. A Bachelor of Arts degree requires one hundred twenty-eight semester hours (128SCH).

ASSOCIATE OF ARTS IN CHRISTIAN EDUCATION
Two Year Program

Area	Semester Hours
General Education Requirements	41
Orientation	2
English	12
English Composition I	(3)
English Composition II.....	(3)
American Literature.....	(3)
English Literature	(3)
History	9
U.S. History I.....	(3)
U.S. History II	(3)
State History	(3)
Math.....	3
Science	6
Biology I	(3)
Biology II.....	(3)
Social Studies	6
Speech	3
Education Requirements	9
Bible Requirements.....	12
Graduation Workshop.....	3
TOTAL	65

BACHELOR OF ARTS IN CHRISTIAN EDUCATION

Four Year Program

Area	Semester Hours
General Education Requirements	41
Orientation	2
English	12
English Composition I	(3)
English Composition II.....	(3)
American Literature.....	(3)
English Literature	(3)
History	9
U.S. History I.....	(3)
U.S. History II.....	(3)
State History	(3)
Math.....	3
Science	6
Biology I.....	(3)
Biology II.....	(3)
Social Studies.....	6
Speech	3
Education Requirements	30
Bible Requirements.....	24
Student Teaching Practicum (9 weeks).....	9
Graduation Workshop.....	3
Electives Related to Major	21
TOTAL	128

MASTER OF ARTS IN CHRISTIAN EDUCATION

The graduate program leading to the Master of Arts in Christian Education degree consists of thirty-six (36SCH) semester credit hours. The graduate program in professional education is established to provide opportunities for advanced study and scholarship and specifically designed to accommodate private Christian school personnel.

The Master’s program requires thirty semester hours (30SCH) of course work and the completion of a seventy-five (75) page thesis for six semester hours (6 SCH). You may, however, complete one additional course and a twenty-five (25) page writing project in place of the thesis for a total of thirty-six (36SCH) semester credit hours at the graduate level.

Recommended courses are:

EDU501	Teaching Special Education	3
EDU502	History of American Education	3
EDU504	Child Development	3
EDU505	Teaching Secondary Science	3
EDU507	Foundation of Education	3
EDU511	Secondary Teaching Methods	3
EDU512	School Administration	3
EDU513	Developing Teaching Skills	3
EDU515	Educational Administration	3
EDU526	The Successful Christian School	3
EDU535	Adolescent Psychology.....	3
EDU540	Supervision of School Personnel	3
EDU542	Influences on American Education	3
EDU544	Developing the Curriculum	3
EDU545	Educational Research	3
EDU550	Guidance and Counseling	3
COM500	Research Methods for Thesis/ Dissertation Preparation	3
EDU589	25-page Writing Project	3
WKSP	Graduation Workshop	3
Electives	9
EDU599	Thesis	6

DOCTOR OF PHILOSOPHY IN SCHOOL ADMINISTRATION

The doctoral program in Christian School Administration consists of research projects that show competent independent investigation of a subject area and is acceptable in form and content. The doctoral program requires forty-five semester hours (45SCH) of course work and the completion of a one hundred and fifty (150) page dissertation for fifteen semester hours (15SCH). The program culminates in an original work - a dissertation representing a significant contribution in the field of study.

The person admitted to our doctorate must have the appropriate academic background and the initiative, self-discipline and the research skills necessary to succeed in such a study. He/She should also have firmly held convictions about the special requirements expected of those in leadership positions from quality Christian institutions.

The doctoral student is assigned a faculty advisor; this person must approve the individualized program that is designed for the student seeking a doctorate.

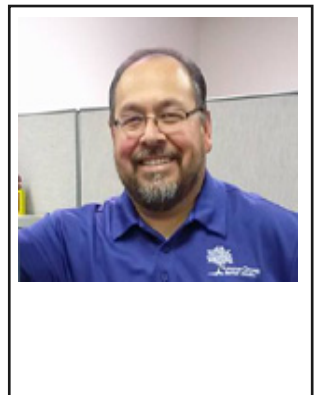
DOCTOR OF PHILOSOPHY IN CHRISTIAN SCHOOL ADMINISTRATION CURRICULUM

EDU610	Survey of Christian School Administration	3
EDU630	Organization and Admin. of Christian Schools	3
EDU720	Supervision of Instruction.....	3
EDU730	Records and Finance in School	3
EDU740	Curriculum Development for Christian Schools	3
EDU750	School Law Applicable to Christian Schools	3
EDU755	School Plant Survey	3
EDU760	Disciple and the Christian School Administrator	3
EDU770	Public Relations	3
EDU780	Applied Research Topics	3
EDU785	Readings in Christian Education	3
WKSP	Graduation Workshop.....	3
EDU799	Dissertation.....	15



H Hispanic Program

Dr. Juan Puente
Director del Programa Hispano



ESTUDIOS EN ESPAÑOL

La Universidad Bautista de Louisiana ofrece una selección amplia de cursos en español. Todos los estudios pueden ser completados en español (incluyendo la disertación a nivel del doctorado). Cada estudiante tendrá acceso a un consejero académico para ayudarlo en el desarrollo de su programa de estudios. La Universidad ha funcionado durante más de treinta años y es aprobada por el Baptist Bible Fellowship International (Compañerismo Bautista Bíblico Internacional) de Springfield, Missouri. Este grupo se compone de más de 4,000 iglesias en los Estados Unidos sin contar las iglesias y misiones en otras naciones. UBL está aprobada para el entrenamiento de los que van como misioneros de esta organización.

La Universidad Bautista de Louisiana ofrece estudios a nivel universitario por medio de un programa de Estudios a Distancia (o sea por estudios externos). Los estudiantes de este programa por lo general son más maduros y auto-disciplinados para lograr el éxito en el programa de estudio individual. También ofrecemos estudios por medio de clases que se reúnen cada semana durante el semestre en los salones de la universidad en Shreveport, Louisiana. Todos los programas ofrecidos por la universidad en español incluyen descuentos sustanciales en el costo de los estudios. Consulte con el Director de Estudios Hispanos en cuanto al costo actual de un programa en particular.

El primer paso para inscribirse en un programa de estudios que ofrecemos es la sumisión de la Petición para Evaluación. (Una copia de este formulario está en nuestra pagina del Internet en www.lbu.edu.) Si es que ha estudiado en una universidad o instituto bíblico anteriormente, se necesita incluir documentación de estos estudios también. UBL quiere ser un apoyo en su preparación para servir al Señor en la manera más adecuado. Con este motivo consideramos cada Petición para Evaluación individualmente, evaluando sus metas, sus méritos y su ministerio. Si tiene preguntas o quiere discutir opciones para aprovechar de los estudios que ofrecemos, le invitamos a contactar al Director de Estudios Hispanos: Dr. Juan Puente, jpuente@lbu.edu.

PROGRAMAS DE ESTUDIOS

CERTIFICADO DE ESTUDIOS BÍBLICOS

Para facilitar el inicio de estudios universitarios, se ofrece un programa por lo cual el alumno puede obtener créditos universitarios antes de inscribirse en un programa para un título universitario. Puede inscribirse en un programa de diez cursos. Al terminar con los cursos requeridos, el alumno recibe un certificado y puede transferir los créditos obtenidos a un programa titular. (Este programa incluye un descuento económico sustancial.)

GRADUADO DE TEOLOGÍA

Este programa requiere noventa y ocho créditos semestrales. Al terminar con los estudios requeridos, el estudiante recibe su título universitario en la ceremonia de graduación con todos los demás graduados. Estos créditos pueden servir como la base para seguir en un programa para la licenciatura, y con solo treinta créditos más, se puede obtener el título universitario de Bachillerato Universitario (Licenciatura) en Estudios Bíblicos.

BACHILLERATO UNIVERSITARIO (Licenciatura)

El programa para la Licenciatura requiere ciento veintiocho (128) créditos semestrales para graduarse. Se puede transferir hasta 3 años de estudios previos (98 créditos semestrales) de otro Instituto, Seminario o Universidad, si es una institución aprobada. (Existe la posibilidad del reconocimiento de algunos créditos por experiencia de vida.)

MAESTRÍA

Este programa requiere treinta y seis (36) créditos semestrales después de la licenciatura. Se debe terminar un mínimo de treinta horas semestrales de cursos (10 cursos y-o equivalencias). LBU ofrece al estudiante dos opciones para las seis horas restantes. Se puede escoger el programa tradicional, escribiendo una tesis de setenta y cinco (75) páginas para ganar seis créditos o se puede elegir la opción alternativa de estudiar un curso extra (3 créditos) y escribir un Proyecto de Escribir de veinticinco páginas (3 créditos).

DOCTORADO

Es un programa de sesenta (60) créditos después de la Maestría. Esto incluye una disertación que vale quince horas semestrales. Los estudios a nivel del doctorado estarán ajustados a las metas y las necesidades del alumno. Ofrecemos tres concentraciones de estudios (Estudios Bíblicos, Teología, y Profecía Avanzada). Para información en cuanto a las opciones y posibilidades de entrar en este programa, favor de comunicarse con el Director de Estudios Hispanos.

**LE INVITAMOS A PEDIR UN CATÁLOGO SUPLEMENTAL
QUE PROVEE DETALLES EN CUANTO AL PROGRAMA
DE ESTUDIOS EN ESPAÑOL**

LOUISIANA BAPTIST UNIVERSITY

COURSE TITLES AND DESCRIPTIONS

COURSE SUBJECTS

- | | |
|-----------------------------|--------------------|
| 1. BIBLICAL STUDIES | 8. MATHEMATICS |
| 2. CHRISTIAN COMMUNICATIONS | 9. MISSIONS |
| 3. CHRISTIAN COUNSELING | 10. MUSIC |
| 4. CHRISTIAN EDUCATION | 11. SCIENCE |
| 5. CHURCH ADMINISTRATION | 12. SOCIAL STUDIES |
| 6. ENGLISH | 13. SPEECH |
| 7. HISTORY | |

NOTE: NEW COURSES ARE CONTINUOUSLY BEING PREPARED AND MAY BE RECOMMENDED BY YOUR ADVISOR AT THE TIME YOU ENROLL.

COURSE DESCRIPTIONS

BIBLICAL STUDIES

BIB100 SEARCH THE SCRIPTURES. This course is a practical guide to help study, interpret and understand the message of the Bible. It provides practical guidelines which point out the best tools to use to dig out Bible truths and equip the students to examine the pages of Scripture with confidence and assurance, included in this study are key chapters and verses, important Biblical topics, types, numbers, prophecies, doctrines, dispensations and covenants.

BIB101 OLD TESTAMENT SURVEY. A historical study of the Old Testament, introducing the literature, religion, and national life of the Hebrews.

BIB102 NEW TESTAMENT SURVEY. A historical study of the beginning of the Christian movement. The order, content, and authors are studied.

BIB104 PERSONAL EVANGELISM. Designed to teach the fundamentals of personal evangelism for believers so that they can fulfill the Great Commission of Christ in their life.

BIB105 METHODS OF BIBLE STUDY. Designed to aid the inquiring Bible student. Students will develop effective study techniques enabling them to make appropriate application of biblical truths.

BIB110 THEOLOGY/BIBLIOLOGY. This is a study of the Trinity and various aspects of the Godhead including the attributes of God. It is also a study of the Bible's teaching concerning itself. A detailed examination of Biblical inerrancy, infallibility, and preservation is conducted.

BIB111 CHRISTOLOGY/PNEUMATOLOGY. In this course an overview of Christology is made and special emphasis is given to Jesus' person, deity, sinlessness, death, and resurrection. The person, deity, and work of the Holy Spirit will also be examined and special emphasis will be placed on the believer's relation to this often neglected member of the Trinity.

BIB201 INTRODUCTION TO THEOLOGY. A thorough introductory study of the fundamental doctrines of Christianity.

BIB202 THE FOUR GOSPELS. Review and study of the works, teachings, and the life of Jesus as paralleled in four of the five historical books in the New Testament. The life of Christ and his philosophies are studied.

BIB203 BIBLE ATLAS. A study of the Bible lands: Mesopotamia, Egypt, Greece, Asia Minor, Syria, Italy, Cyprus, Phoenicia, Iran, and Palestine. To understand the Bible properly, it is necessary to study the geography and topography of the land of Israel and relevant nations.

BIB205 LIFE OF CHRIST I. An overarching study of the earthly life and ministry of the Messiah as revealed in the combined information recorded in the four gospels.

BIB206 LIFE OF CHRIST II. A continuation of BIB205.

BIB210 ANTHROPOLOGY/HAMARTIOLOGY. A study of the doctrine of man including his creation, nature, and fall. The doctrine of sin is studied in regard to its origin, transmission, and ultimate outcome.

BIB211 ECCLESIOLOGY/SOTERIOLOGY. The doctrine of the church is studied with an emphasis on its origin, nature, ordinances, and government. The word "ekklesia" is examined in detail, including the plenary scope of its applications. Also, the doctrine of salvation will be thoroughly explored.

BIB215 THE TEXT BEHIND YOUR BIBLE. An introduction to textual studies. Consideration will be given to the Greek texts from which the various English translations were developed and why the variations exist.

BIB220 APOLOGETICS. Equips the beginning Bible student with the precepts of articulating and defending the faith. An excellent study that builds a solid foundation for the study of apologetics at an advanced level.

BIB300 GLEANINGS FROM RUTH. An expositional study of the book of Ruth with emphasis on the main characters, the historical setting, and the providential care of God.

BIB301 ESTHER. A systematic study of this little known book of the Bible and its applications.

BIB303 PENTATEUCH. A study of the first five books of the Bible. An exposition of Genesis, the foundation book, with emphasis upon the Creation and Flood, and the origin of the Hebrew nation.

BIB304 ACTS OF THE APOSTLES. Gives the history and the format of the New Testament church. Exposition of the argument of the book, with special consideration of hermeneutical principles involved in the interpretation of historical literature.

BIB305 SERMON BUILDING. Sermon Building is a course that provides the student with a systematic, eight-step process of sermon development that begins with the sermon idea and carries through to the completed sermon outline or manuscript.

BIB307 PAULINE EPISTLES. This is the study of the fourteen Pauline books, from Romans through Hebrews. Emphasis is on the techniques and methods for studying individual books of the Bible. A harmony of the writings of Paul as related to Christ and the Covenants is also explored.

BIB308 GENERAL EPISTLES. A study of the writings of Peter, James, and John as related to the teachings of Christ. Emphasis is on the appreciation of the gems of wisdom, biblical philosophies, and doctrines.

BIB312 THE DISCIPLE MAKING PASTOR. A practical study of this vital aspect of the pastoral ministry as he develops those who can apply Christian principles to their daily lives.

BIB314 ANGELOLOGY/ESCHATOLOGY. In this course the origin, order, and activity of the angelic world (both fallen and elect) are studied. Satanology and demonology are surveyed. Also the Bible's teaching of the future is examined. The Rapture, Tribulation, and Millennial Reign of Christ are covered and the various views on these are examined.

BIB400 INTRODUCTION TO THE REVELATION. An outstanding study of the end times from a conservative, premillennial standpoint.

BIB403 STUDIES IN DANIEL. Scholars consider Daniel's prophecies fundamental to understanding the main theme of the end times. Apocalyptic in style, Daniel's predictions refer to future events using many figures of speech and symbols to convey God's message.

BIB414 PASTOROLOGY. Explores the call, the commitment, and the unique qualities required of the successful pastor.

BIB423 BAPTIST HERITAGE. A study of the historical roots of Baptists with emphasis on the modern changes and developments within the various Baptist groups in the United States.

BIB453 HERMENEUTICS. This course presents the history, principles, and methods of biblical interpretation. The development of principles of interpretation is traced from the ancient Jews through the apostolic, middle, and modern ages.

BIB460 APPLIED RESEARCH PROJECTS. With the approval of his/her advisor, a student may substitute a research project in lieu of a standard course. The student will be required to present the findings of his research in composition which demonstrates appropriate research and documentation techniques.

BIB470 BIBLE LANDS EXPEDITION. A student who participates in a tour of the biblical sites during the course of his studies may earn 3 credit hours by presenting a composition including basic research regarding the sites visited, documentation of his/her travels, and an evaluation of the knowledge gained from that experience. Students should contact their advisor for further details.

BIB480 INTRODUCTION TO BIBLICAL LANGUAGES. This course introduces the student to the original languages of the Bible, basic linguistic concepts and some electronic tools available for Bible study. The student will be much better prepared for Greek I and/or Hebrew I in future studies as a result of this course.

BIB490-99 COOPERATIVE EDUCATION. Individually-approved learning experiences with preparatory readings, regular reports and close supervision in an appropriate professional setting such as a church or parish.

BIB500 THE TABERNACLE. An in-depth look inside of the Old Testament Tabernacle with all of its types and figures particularly as they relate to the redemption that is in our Lord and Savior Jesus Christ.

BIB501 HISTORICAL BOOKS. Review and study of the Old Testament books that provide a means of understanding the political and social history of the Hebrew nation.

BIB502 POETICAL BOOKS. An introduction to the nature of the Old Testament poetry, a study of Song of Solomon, Job, Psalms, Proverbs, and Ecclesiastes.

BIB503 EXPOSITION OF GENESIS An expositional study of the book, with emphasis on such themes as Creation, Fall, Flood, Abrahamic Covenant, and the beginning of basic doctrines.

BIB504 MAJOR PROPHETS. A study of the prophecies of Isaiah, Jeremiah, Ezekiel, and Daniel.

BIB505 MINOR PROPHETS. A study of biblical prophecy pertaining to Israel, the Gentiles, and the Bible. This book is a consideration of how God used holy men in eccentric ways.

BIB506 LIFE OF PAUL. A course that blends Paul's life and ministry given in Acts with historically significant selections in the Pauline Epistles.

BIB507 LIFE OF PAUL II. A continuation of BIB506.

BIB509 ROMANS I. An expositional study of the book, with emphasis on such themes as salvation, holy living, law and grace, the place of the Jew and Gentile in God's plan, the Christian and secular government, and Christian liberty.

BIB510 ROMANS II. A continuation of BIB509.

BIB513 THE REVELATION. Intensive study and assistance in interpretation of the final book of the Bible. The course demonstrates why the book is considered by many to be the greatest book of prophecy ever written and why it is the crowning jewel of the preceding sixty-five books of the Bible.

BIB515 THE DISPENSATIONALISM CONTROVERSY. This course takes an advanced look at Dispensationalism. In a time when so many regard this approach to understanding the Word of God as nonsense, this course presents the case for its continued adherence and understanding.

BIB517 BAPTIST CHURCH HISTORY. This study of the Anabaptists of the Pre-Reformation and Reformation periods with emphasis on their principles, development, and impacts. It also traces the history of Baptists from that period of time to early American Baptists and on into this century.

BIB520 INTRODUCTION TO THEOLOGY. A thorough introductory study to some of the basic theological issues.

BIB525 CURRENT TRENDS AND PROPHECY. An exciting study of recent developments in Israel and the Middle East and how those events relate to Biblical Prophecy.

BIB526 BECOMING CONVERSANT WITH THE EMERGENT CHURCH. A study of this contemporary phenomenon which is attempting to redefine worship and the church in the twenty-first century.

BIB527 APOLOGETICS AND THE NEW GENERATION. This course is designed to help the student to engage an ever-changing culture. The student will explore a new approach, new methods, and new challenges in the area of apologetics while grounding those concepts squarely in Biblical truth.

BIB528 CHRISTIAN WORLDVIEW AND APOLOGETICS. This course is designed to help the student to engage the lost of this generation and further develop a Christian worldview by revisiting those basic beliefs given by our Lord.

BIB529 MAKING THE CASE FOR CHRIST. This course is designed to help the student to engage the lost in these days of increasing skepticism by once again examining the evidence for Christ, history's most compelling figure.

BIB531 GREEK I. The Greek used in the New Testament is called "Koine" or common Greek. This course emphasizes the learning of the Greek alphabet, and the use of available scholarly resources to understand and employ Greek more efficiently in Bible study, teaching, and preaching.

BIB532 GREEK II. Continuation of Greek I.

BIB540 MINISTRY OF EVANGELISM. An in-depth study of the role of the evangelist and a study of important evangelists both past and present.

BIB543 HEBREW I. This course emphasizes the learning of the Hebrew alphabet, and the use of available scholarly resources to understand and employ Hebrew more efficiently in Bible study, teaching, and preaching.

BIB544 HEBREW II. Continuation of Hebrew I.

BIB545 PASTORAL WORKSHOP. This course deals in considerable depth with the role of the pastor and his relation to the local church.

BIB560 APPLIED RESEARCH TOPICS. See BIB760

BIB565 READINGS IN BIBLICAL STUDIES. See BIB765

BIB570 BIBLE LANDS RESEARCH. A student who participates in a tour of the biblical sites during the course of his studies may earn 3 credit hours by presenting a composition including basic research regarding the sites visited, documentation of his/her travels, and an evaluation of the knowledge gained from that experience. Students should contact their advisor for further details.

BIB589 WRITING PROJECT. Every Master level student not completing a Master's thesis must complete a twenty-five (25) page writing project. This project must exhibit originality and thoroughness of research and be of quality acceptable to the faculty advisor. Complete instructions are available through your Department Dean.

BIB590-598 COOPERATIVE EDUCATION. See BIB490-598.

BIB599 THESIS. This course is taken for six semester credit hours (6 SCH) for the thesis project. No thesis credit is awarded until the thesis is completed and accepted.

BIB600 THE NEW AGE MOVEMENT. A study of the serious implications of the "All is One" concept and other principles of the New Age Movement and how they challenge authentic Christian beliefs.

BIB603 ESCHATOLOGY. Considers the topics of death, the resurrection, Christ's second coming, judgment, heaven, and hell. Some attention is given to various prophecies of the Old Testament as they relate to the subject. Attention is given to the search of the Holy Scriptures for indicators of eschatological trends in human history.

BIB607 CHRISTOLOGY I. A course which explores the different aspects of Christ's earthly ministry and his divine attributes.

BIB608 CHRISTOLOGY II. A continuation of the course BIB607.

BIB610 LIFE IN BIBLE TIMES. A study of the customs, architecture, and lifestyles of the Holy Land in biblical times.

BIB613 REFORMATION HISTORY. An outstanding study of the history of Christianity with emphasis on the period of the Reformation and the leaders of that era.

BIB614 ECCLESIOLOGY. A study of the doctrines of the body of Christ, the local church and its organization, ministry, ordinances, government, and purpose.

BIB615 SURVEY OF THE HOLY SPIRIT. An intensive study of the Holy Spirit, his characteristics, attributes, and influence on the believer.

BIB620 CHRISTIAN PHILOSOPHY. A course that is designed to help the student gain confidence in the field of philosophy. The student will learn what is philosophy, how to study philosophy, and how to think logically. Also, he/she will learn how to recognize and assess world views as they relate to the Christian view of God, history, and culture.

BIB621 ADVANCED STUDIES IN JOHN. An in-depth study of the God-head, the "I am's," and twenty-one issues and teachings which are not found in the synoptic Gospels.

BIB630 GENERAL SYSTEMATIC THEOLOGY. Advanced study of the nature of God in the Old and New Testament.

BIB650 CHRISTIAN APOLOGETICS. A thorough study of methodology, theistic apologetics, and Christian apologetics.

BIB711 THE ANABAPTISTS. A study of the historical events and the distinctive doctrinal characteristics that defined this movement.

BIB725 ARCHAEOLOGY OF THE ANCIENT NEAR EAST. A study of the principles of the archaeological method and a survey of the primary excavations contributing to the knowledge of biblical history and to the interpretation of Old Testament texts.

BIB750 ADVANCED ACTS OF THE APOSTLES. This course reviews the history and the format of the New Testament church. Exposition of the argument of the book, with special consideration of hermeneutical principles involved in the interpretation of historical literature.

BIB755 STUDIES IN THE REVELATION. An advanced course on Revelation in light of recent world events.

BIB760 APPLIED RESEARCH TOPICS. The role of individual research is an important element in the requirements of graduate education. Students will be expected to understand the forming of research questions and the appropriate methodology and techniques in the development of a research project and paper. Applied research projects require prior approval of the academic advisor.

BIB765 READINGS IN BIBLICAL STUDIES. This is an independent reading course taken in conjunction with other assigned courses. A student must work with his or her chairperson in developing the bibliography and draft a comprehensive literature review. The readings course may be taken upon approval of the faculty chairperson.

BIB770 BIBLE LANDS RESEARCH. A student who participates in a tour of the biblical sites during the course of his studies may earn 3 credit hours by presenting a composition including basic research regarding the sites visited, documentation of his/her travels, and an evaluation of the knowledge gained from that experience. Students should contact their advisor for further details.

BIB790-798 COOPERATIVE EDUCATION. Individually-approved learning experiences with preparatory readings, regular reports, and close supervision in an appropriate professional setting such as a church or parish.

BIB799 DISSERTATION. This course is taken to provide fifteen semester credit hours (15 SCH) for the dissertation project. The dissertation is to be of a length and scope which is commensurate with a rigorous and scholarly treatment of the subject. Special instructions are available through your Academic Advisor.

The following prophetic courses may be taken in the university or seminary.

BIB801 ADVANCED PROPHETICS I. Prophecy in the Pentateuch. A careful examination of all the prophecy of the first five books of the Bible in addition to special predictions. Attention is given to biblical typology in which persons, places, and events in Israel's history forecast Christ, His sacrifice, and the principles of Christian living.

BIB802 ADVANCED PROPHETICS II. Prophecy in the Historical Books. A review and study of the historical books Joshua through Esther, focusing on both fulfilled and unfulfilled prophecy. Emphasis on the Davidic Covenant and the prophetic ministries and prophecies from Elijah to Malachi.

BIB803 ADVANCED PROPHETICS III. Prophecy in the Poetical Books. A special examination of all the prophecies in Job through the Song of Solomon. Special attention will be given to prophetic, messianic, and millennial Psalms.

BIB804 ADVANCED PROPHETICS IV. Prophecy in the Major Prophets. This entails research in the prophecies of Isaiah, Jeremiah, Ezekiel, and Daniel, particularly those related to the First and Second coming of Christ.

BIB805 ADVANCED PROPHETICS V. Prophecy in the Minor Prophets. A study of biblical predictions pertaining to Israel, the Gentiles, the last days, the millennium, and the Messiah. These courses will also consider how God used holy men in peculiar ways.

BIB806 ADVANCED PROPHETICS VI. Prophecy in the Four Gospels and Acts. A study of Christ's life and ministry revealing how he fulfilled Old Testament prophecy in His life and ministry. This course also involves the prophecies of Jesus Christ relative to His times and the end times. Predictions in Acts are also analyzed, including fulfillment of Old Testament prophecy.

BIB807 ADVANCED PROPHETICS VII. Prophecy in the Epistles. All predictions in the Pauline Epistles (Romans through Philemon) and the General Epistles (Hebrews through Jude) will be carefully studied and researched.

BIB808 ADVANCED PROPHETICS VIII. Prophecy in Revelation. Intensive study and assistance in the interpretation of the final book of the Bible. The course demonstrates why the book is considered to be the greatest book of prophecy ever written and why it is the crowning jewel of the preceding sixty-five books of the Bible.

BIB809 INTRODUCTION TO BIBLICAL PROPHECY. This course is an overview of the area of prophetic truth from the Scriptures. It is also an investigation of fulfilled and unfulfilled prophecy.

BIB810 RESEARCH IN DANIEL'S WRITING. This course is an analytical study of the Book of Daniel with special emphasis on prophetic portions. The study includes God's plans for Israel and the "Times of the Gentiles."

BIB811 THE BOOK OF REVELATION. This course is an extensive, in-depth study of the Apocalypse with an examination of various schools of interpretation, but with a focus on the futurist viewpoint.

BIB812 ISRAELOLOGY. This course is a fresh examination of the missing link in systematic theology, which is Israelology.

BIB813 ADVANCED PROPHETIC HERMENEUTICS. This course is a focused study on basic and advanced hermeneutical principles for the study of prophecy.

BIB814 DISPENSATIONALISM AND PREMILLENNIALISM. A look at the history and development of these concepts from biblical, apostolic, ante-Nicene, historical, and post-reformation viewpoints.

BIB815 OLD TESTAMENT ESCHATOLOGY. This course is an in-depth study of most of the Old Testament's unfulfilled prophecies with a focus on the Psalms, Isaiah, Jeremiah, Ezekiel, and Zechariah.

BIB816 HIGHLIGHTS OF THE NEW TESTAMENT PROPHETIC PASSAGES. This course is an exhaustive look at the prophetic teachings of Jesus Christ in the Gospels, the predictive elements in Paul's writings, Peter's epistles, Jude, and James.

BIB817 SURVEY OF POPULAR PROPHETIC BOOKS (1970-PRESENT). Works by Grant Jeffrey, Hal Lindsay, Chuck Missler, David Lewis, and other current writers will be examined.

BIB818 THE JEWISH TEMPLES, PAST, AND FUTURE. This course is a careful study of Solomon's Temple, Herod's Temple, present temple thought in Israel, the tribulation temple, and the millennial temple as Ezekiel describes it.

CHRISTIAN COMMUNICATIONS

COM101 COMMUNICATING THE GOSPEL. This course is a practical study of all the different mediums of communicating the Gospel through preaching, publications, and broadcasting.

COM203 INTRODUCTION TO RELIGIOUS JOURNALISM. This is a course in basic journalism but with a religious slant. Students will study format, writing style, and how to do research.

COM206 CREATIVE CHRISTIAN WRITING. While studying and practicing the tools of effective writing, the student is encouraged to apply the tools in an area of his own personal interest. Special attention is given to poetry, characterization, and other forms of imaginative writing.

COM301 CHRISTIAN BROADCAST PROGRAMMING. Analysis of local radio and television station programming, policy, and practice is made. Special attention is given to the role and function of outside program producers and syndicators. After selecting a particular market profile, a schedule is built for a radio station and a TV station.

COM307 CREATIVE CHRISTIAN WRITING. The student will learn how to write more effectively. In this course, you will learn the different formats of writing, how to improve your writing skills, and how to express yourself in a variety of ways.

COM308 MASTERING CONTEMPORARY PREACHING. This course provides insight for today's preachers who want their sermons to relate to everyday life. The course examines the challenges of applying the Word of God to people in today's world and developing an effective weekly preaching ministry for your congregation.

COM312 ANOINTED FOR BUSINESS. The early church founders were mostly community leaders and highly successful business leaders. However, today the perceived "wall" between commercial pursuit and service to God continues to be a barrier to advancing His kingdom. This course invites Christians to knock down the wall.

COM313 INTERNSHIP. Students work under the supervision of management personnel to gain experience in the practice of effective management techniques.

COM315 FINANCIAL MANAGEMENT. A comprehensive study of all aspects of financial management both personal and professional. Nine lessons on acquiring, managing, and retaining money.

COM320 FAILING FORWARD. This course will teach you how to understand and overcome failure by mastering fear instead of being mastered by it. Apply simple strategies for success after experiencing a major setback.

COM400 JOURNALISM. This course focuses on advanced reporting techniques involving use of public records and development of news sources. It is designed to give the student a variety of journalistic writing experiences: investigative reporting, feature articles, and editorials with special emphasis on religious journalism.

COM402 MARKETING COMMUNICATIONS. Emphasizes functions involved in the marketing process and development of marketing methods. Some of these same marketing techniques could be helpful in developing an effective church out-reach program.

COM403 MARKETING COMMUNICATIONS. A continuation of COM402.

COM408 SEMINAR. Students will be acquainted with business and leadership techniques and processes by examining actual communication and business problems and their potential solutions.

COM410 HUMAN RELATIONS IN MANAGEMENT. Contemporary study which includes the current legal and regulatory environment and effective techniques for management relationships with employees and other managers.

COM420 EFFECTIVE COMMUNICATIONS. This course considers most approaches to the art and the science of public relations and studies the gamut

of effective public relations strategies, including digital branding and use of the social media.

COM425 SPECIAL TOPIC SEMINAR. Specific content of this course will vary. The course is designed to do extensive work in specific areas; trends, periods, and ideas in mass communications.

COM448 TEN PRINCIPLES OF SUCCESS. A condensed study of powerful Biblical concepts and common sense applications that can produce great results in the lives of both ministers and lay persons.

COM450, 451 SPECIAL TOPICS IN ORGANIZATIONAL COMMUNICATION. Topics may include nonverbal communication, interpersonal communication in multinational corporations, organizations as culture, and readings in organizational communication.

COM490 COOPERATIVE EDUCATION. Individually-approved learning experiences with preparatory readings, regular reports and close supervision in an appropriate professional setting such as a church or parish.

COM505 PRINCIPLE CENTERED LEADERSHIP. This course centers on the ethics and sound principles of leadership that will create an atmosphere of trust among those that you manage. This is also a study in the effectiveness of teamwork. **CL**

COM508 SEMINAR. Seminars allow student to be acquainted with business and leadership techniques and processes by examining actual communication and business problems and their potential solutions.

COM510 VISIONARY LEADERSHIP. This course defines the difference between a dreamer and a true visionary. How do you turn a dream into reality? How do you influence people to buy into your vision? **CL**

COM512 TECHNICAL WRITING. This course teaches the student how to do technical writing for any field in which such writing is required. The students learn how and where to find information; how to write various kinds of letters, memorandums, recommendations, reports, proposals, and instruction manuals; how to work with graphics; and how to make oral presentations.

COM514, 515 SPECIAL TOPICS IN ORGANIZATIONAL COMMUNICATION. Topics may include nonverbal communication, interpersonal communication in multinational corporations, organizations as culture, and readings in organizational communication.

COM520 JOURNALISM PRACTICUM. A writing course where the student is required to write a variety of articles that are of publishable quality. These may be real or factitious events.

COM525 SPECIAL TOPIC SEMINAR. Specific content of this course will vary. The course is designed to do extensive work in specific areas; trends, periods, and ideas in mass communications. Seminars are conducted by LBU. **CL**

COM530 STRATEGIC CHURCH ORGANIZATION. How to develop an effective self-study, what should be included and how it should be structured. How to better organize in order to give effective leadership.

COM542 BIBLICAL REQUIREMENTS FOR GREATER LEADERSHIP. This text follows the movements of David from Shepherd to Sovereign. Learn leadership traits from the person that God called “a man after His own heart”. **CL**

COM544 EXECUTIVE COACHING. This course is designed to provide the student with skills to conduct face to face coaching sessions in order to obtain positive outcomes in most organizational settings.

COM545 LEADERSHIP. A study in Christian leadership qualities and goals with special emphasis on the personal development and spiritual growth of the leader. Designed to provide the student with the skills to develop a leadership philosophy. The course provides empowering initiatives and ideas for handling integral issues facing organization. **CL**

COM546 LAWS OF LEADERSHIP. Author John Maxwell carefully documents twenty-one irrefutable laws needed for successful leadership. **CL**

COM549 CHRISTIAN FICTION WRITING. Study of how to develop and write fictional articles and stories. The student will also study how to take a real Biblical account and write a fictional account of other events that were taking place.

COM551 APPLIED RESEARCH. The role of individual research is an important element in the requirements of postgraduate education. Students will be expected to understand the forming of research questions and the appropriate methodology and techniques in the development of a research paper. Applied research projects require prior approval of the faculty chairperson. May be repeated as COM552. **CL**

COM553 ENTRELEADERSHIP. Finding the elusive formula that perfectly blends the creativity of the start-up with the leadership qualities to guide a growing team. A guide to proven principles that will help you to lead with confidence. **CL**

COM555 READING IN COMMUNICATIONS. Independent reading course utilizing current book publications, periodicals and newspapers. A student must work with his or her advisor in developing the bibliography and drafting a comprehensive literature review. May be repeated as COM556. **CL**

COM589 WRITING PROJECT. Every Master level student not completing a Master's thesis must complete a twenty-five (25) page writing project. This project must exhibit originality and thoroughness of research and be of quality acceptable to the faculty advisor. Complete instructions are available through your Department Dean.

COM590 COOPERATIVE EDUCATION. Individually-approved learning experiences with preparatory readings, regular reports and close supervision in an appropriate professional setting such as a business, industry, church business office, or broadcast facility.

COM599 THESIS. This course is taken for six semester credit hours (6 SCH) for the thesis project. No thesis credit is awarded until the thesis is completed and accepted.

CHRISTIAN LEADERSHIP

CL600 MASTER PLAN FOR LEADERS. A guide to biblical leadership proven principles and practical instructions that deal with consistent leadership in all situations.

CL 602 SOCIAL EPIDEMIOLOGY. The tipping point assembles talking points on economic trends, marketing and social epidemiology. The book sets out to explain why human behavior like they do and how sometimes a small paradigm shift can cause a tipping point that will have a great effect on the future success or failure of an organization.

CL605 LEADERSHIP CREDIBILITY. A course that explores the issues and principles in the making of a leader whom constituents will want to follow and a survey of why people commit to leaders that they find credible and trustworthy.

CL610 360 LEADERSHIP. International best selling author, speaker, and consultant, John Maxwell shows how that 99% of all leadership in most successful organizations takes place in the middle. This course is wise, practical, and utterly relevant to today's demanding work challenges.

CL615 SPIRITUAL ETHICS. An in-depth study of how business leaders regularly face the difficult task of reconciling their personal beliefs with the bottom line demand of their business obligations. God is My CEO shows that by leading with spiritual principles you also build morals, increase productivity, foster loyalty, and retain employees.

CL618 ENTREPRENEURSHIP. Entrepreneurial principles that will work in both religious or non-religious settings, practical tips on starting and growing a church, non-profit or for-profit organization or company.

CL620 COMBATING STRESS. Dealing with stress is an intregral part of leadership. This course deals with stress factors and how to combat them.

CL625 LEADING AT A HIGHER LEVEL. This course translates decades of research and twenty-five years of global experience into simple, practical, and powerful strategies to equip leaders at every level to build organizations that produce bottom line results.

CL630 LEADING THROUGH CONFLICT. This is a key course in the art of negotiations. A study on how successful leaders transform difference into opportunities.

CL635 THE PURSUIT OF LEADERSHIP. This is a course about principles and practices from the life of Moses. Moses stands as the centerpiece of Old Testament history and his leadership is the central event of the Old Testament.

CL636 CREATIVE CHURCH LEADERSHIP. This course centers around the ministries of two of the 21st century's largest and most effective churches. This course offers good common sense ideas that will work not only in a large mega-church but in small local church settings.

CL690 COOPERATIVE EDUCATION. Individually-approved learning experiences with preparatory readings, regular reports and close supervision in an appropriate professional setting such as a business, industry, church business office, or broadcast facility.

CL700 APPLIED RESEARCH. The role of individual research is an important element in the requirements of postgraduate education. Students will be expected to understand the forming of research questions and the appropriate methodology and techniques in the development of a research paper. Applied research projects require prior approval of the faculty chairperson. May be repeated as CL702.

CL705 READINGS IN LEADERSHIP. Independent reading course utilizing current book publications, periodicals and newspapers. A student must work with his or her advisor in developing the bibliography and drafting a comprehensive literature review. May be repeated as CL706.

CL720 LEADERSHIP PRACTICUM. Requires a professional leadership project, must be approved by the faculty advisor.

CL799 DISSERTATION. This course is taken to provide fifteen semester credit hours (15 SCH) for the dissertation project. The dissertation is to be of a length and scope which is commensurate with a rigorous and scholarly treatment of the subject. Special instructions are available through your Academic Advisor.

CHRISTIAN COUNSELING

PCC200 INTRODUCTION TO PSYCHOLOGY. This course introduces the student to the study of human behavior by first surveying the historical development of psychology as a science. Emphasis is placed on the methods of studying human relationships.

PCC201 INNOVATIVE APPROACHES TO COUNSELING I. A survey of new strategies and therapies in the professional field of counseling.

PCC202 INNOVATIVE APPROACHES TO COUNSELING II. A continuation of PCC201.

PCC203 COUNSELING CHRISTIAN WORKERS. Presents the scope and nature of challenges encountered by Christian laymen and professionals in Christian ministry and how to diagnose these and apply therapeutic techniques.

PCC204 BIBLICAL COUNSELING FOR EVERY CHRISTIAN. This course provides clear information and excellent models to help you understand what discipleship counseling is all about.

PCC207 SPIRIT CONTROLLED TEMPERAMENT. Studies human behavior using the four basic temperament types. Special emphasis is placed on what it means to be controlled by the Holy Spirit.

PCC304 SELF-TALK, IMAGERY, AND PRAYER IN COUNSELING. Presents techniques for the use of the therapies of self-talk, imagery, and prayer in counseling the individual client in the local church setting.

PCC305 COUNSELING THOSE WITH EATING DISORDERS. A discussion of the nature, causes and consequences of anorexia, bulimia, and other eating disorders and their treatment.

PCC306 COUNSELING THE DEPRESSED. Deals with the dimensions of depression and effective therapies for counseling the depressed person.

PCC407 COUNSELING FOR FAMILY VIOLENCE AND ABUSE. Focuses on spousal abuse, child abuse and elder abuse. Suggested treatment techniques are provided for each of these abusive and illegal behaviors.

PCC409 COUNSELING AND GUILT. Provides an understanding of guilt and teaches how to counsel for its prevention and remediation. The development of strategies for elimination of guilt and its debilitating effects are emphasized.

PCC410 COUNSELING AND THE SEARCH FOR MEANING. Guidelines for how to counsel those who are struggling to find direction, purpose and personal and spiritual meaning in life.

PCC411 COUNSELING FOR DEPRESSION AND SUICIDE IN CHILDREN AND ADOLESCENTS. This course is designed to provide counselors, school social workers, and school psychologists a foundation of knowledge of the causes and clinical therapies for dysfunctional and self-destructive behaviors among children and adolescents.

PCC465 SOUL TALK. This course proposes a counseling model to help clinicians connect more deeply with the struggles, desires, and dreams of others.

PCC490-499 COOPERATIVE EDUCATION. Individually-approved learning experiences with preparatory readings, regular reports and close supervision in an appropriate professional setting such as a church, social agency or other counseling environment.

PCC500 ATTENTION DEFICIT DISORDER. This course will enable you to understand the facts and myths about Attention Deficit Disorder.

PCC504 GROUP COUNSELING. This course chronicles the development of a group therapy session and gives the student an opportunity to examine the group process in-depth.

PCC508 ESSENTIALS OF COGNITIVE ASSESSMENT. This course is designed to help busy counselors quickly acquire the knowledge and skills they need to make optimal use of major psychological assessment instruments.

PCC511 COUNSELING FOR UNPLANNED PREGNANCY AND INFERTILITY. Arms the counselor with understanding and techniques designed to assist those who are dealing with unplanned pregnancies and issues related to infertility.

PCC512 COUNSELING FOR PROBLEMS OF SELF-CONTROL. A review of the foundations to the problem of self-control, techniques for identifying the causes for lack of self-control, along with clinical and biblical solutions to problems of self-control.

PCC513 COUNSELING FOR SUBSTANCE ABUSE AND ADDICTION. A course which addresses substance abuse and addiction in clients. Provides a Christian approach to counseling the people in our society who are afflicted with this destructive and life threatening behavioral disorder.

PCC514 COUNSELING AND SELF-ESTEEM. Provides information and techniques designed to teach the counselor how to assist an individual in developing a sound self-image and functional self-worth.

PCC515 ETHNICITY, FAMILIES AND COUNSELING. Designed to provide an in-depth understanding of family issues and to suggest the approaches to appropriate and effective family counseling.

PCC517 COUNSELING FOR ANGER. Helps the counselor understand the causes of anger, how to remediate anger, to resolve problems initiated by anger in marriages, in children, in one's and in one's relationship with God.

PCC518 COUNSELING THE SPIRITUALLY DYSFUNCTIONAL. Differentiates between mental disorder and demonic influence. Provides biblically-based interventions and counseling therapies.

PCC519 COUNSELING AND DIVORCE. Divorce is dealt with from the Scriptural perspective. Focus is on these questions: "Is divorce justifiable?" "What should be the Christian counselor's attitude toward divorced persons?" "Under what conditions, according to the Scripture, is an individual entitled to a divorce?" "What counseling therapies are most effective in interfacing with those who have experienced a divorce?"

PCC520 MARRIAGE AND FAMILY COUNSELING. An enabling view of marriage counseling is presented. Biblical guidelines, counseling methodologies and other issues are addressed.

PCC525 HUMAN DEVELOPMENT. A comprehensive introduction to research, theory, and application in the field of personality. Individual differences and situational influences are examined concerning authoritarianism, achievement motivation, anxiety, intelligence, self-concept, interpersonal attraction, aggression, sexuality, and altruism.

PCC526 READINGS IN CURRENT COUNSELING TRENDS. Independent reading course utilizing current book publications, periodicals and newspapers. A student must work with his or her advisor in developing the bibliography and drafting a comprehensive literature review.

PCC528 PSYCHOTHERAPY I. This course gives a careful analysis and penetrating critiques of Freudian Psychoanalysis, Ego-Psychology, Behavior Modification, Rational Emotive Therapy, Cognitive-Behavior Therapy, Adlerian and Reality Therapies, Person-Centered Therapy, Existential Therapy, Gestalt Therapy, Family Therapy, and Jungian Therapy.

PCC529 PSYCHOTHERAPY II. A continuation of PCC528.

PCC534 COUNSELING IN TIMES OF CRISIS. In-depth information is presented regarding current crisis intervention techniques and the goals of counseling in crisis situations.

PCC535 ADOLESCENT PSYCHOLOGY. This course helps youth workers, counselors, pastors and teachers gain valuable insight into the different struggles of adolescents and how to help them gain victory over these struggles.

PCC540 CAREER COUNSELING. This course will give much needed insight into vocational and career counseling.

PCC587 PRACTICUMS IN COUNSELING. A practicum requires that the student be actively participating in an organized counseling facility under an approved supervisor. The student is required to submit regular reports of actual involvement in the counseling process. This report shall show dates and times of involvement along with supervisory evaluation of the student's progress. All practicums require prior approval.

PCC589 WRITING PROJECT. Every Master level student not completing a Master's thesis must complete a twenty-five (25) page writing project. This project must exhibit originality and thoroughness of research and be of quality acceptable to the faculty advisor. Complete instructions are available through your Department Dean.

PCC590-598 COOPERATIVE EDUCATION. Individually-approved learning experiences with preparatory readings, regular reports and close supervision in an appropriate professional setting such as a church, social agency or other counseling environment.

PCC599 THESIS. This course is taken for six semester credit hours (6 SCH) for the thesis project. No thesis credit is awarded until the thesis is completed and accepted.

PCC610 STUDY OF NOUTHETIC OF COUNSELING I. The study and procedure of using the Scriptures for the purpose of Nouthetic confrontation, which is to positively effect both personality and behavioral changes through encouragement, act, and discipline.

PCC611 STUDY OF NOUTHETIC OF COUNSELING II. Continuation of PCC610.

PCC621 COUNSELING THE SICK AND TERMINALLY ILL. Provides biblically-based techniques for use in counseling and ministering to the seriously and terminally ill.

PCC622 COUNSELING ADULT CHILDREN OF ALCOHOLICS. Provides an understanding of the alcoholic family and the children of the alcoholic. Counseling techniques for dealing with the relational and spiritual problems of children of the alcoholic.

PCC623 COUNSELING AND CHILDREN. Information on young children through elementary school age is provided. Focus is on counseling strategies which are effective in addressing issues related to children.

PCC624 COUNSELING BEFORE MARRIAGE. Assists the Christian in understanding how to prepare people for marriage and remarriage. It assists counselor to understand the issues and proclivities of marriage and thus enables the counselor more effectively to address a client's questions and challenges.

PCC625 COUNSELING AND HOMOSEXUALITY. Provides the latest facts from a Christian physician and assists the Christian counselor in effectively and compassionately ministering to victims of AIDS and their families.

PCC630 CONFLICT MANAGEMENT AND COUNSELING. A study of how to manage and resolve conflicts or disputes among groups and individuals.

PCC631 SEXUAL ETHICS IN COUNSELING. Considers the damage that occurs professionally, personally, and ethically when ministers and counselors from a sexual lesson with their parishioners/clients. This study also deals with the professional liability when such a relationship occurs.

PCC632 BIBLICAL COUNSELING THERAPIES. A course for every Christian counselor, with practical step-by-step instructions for leading people to personal remediation of psychological/emotional dysfunctions. The concept of Spirituotherapy is both explained and illustrated through the application of selected therapies.

PCC640 THE BIBLE AND RECOVERY: Biblical Aspects of the Twelve Steps and other Recovery Principles. This course gives insight to the Biblical Aspects of the Twelve steps and other recovery programs.

PCC701-704 APPLIED RESEARCH TOPICS. The role of individual research is an important element in the requirements of graduate education. Students will be expected to understand the forming of research questions and the appropriate methodology and techniques in the development of a research project and paper. Applied research projects require prior approval of the faculty chairperson.

PCC705 READINGS IN CHRISTIAN COUNSELING. This is an independent reading course taken in conjunction with other assigned courses. A student must work with his or her faculty chairperson in developing the bibliography and draft a comprehensive literature review.

RECOMMENDED SUBJECTS FOR APPLIED RESEARCH AND DIRECTED READINGS

Diagnostic Strategies
Topics in Counseling and Psychopharmacology
Human Behavior I and II
Social Psychology Topics
Clinical Psychology Topics
Corporate Psychology
Social Administration
Organizational Behavior

PCC710 PRACTICUMS IN CHRISTIAN COUNSELING. A practicum requires that the student be actively participating in an organized counseling facility under an approved supervisor. The student is required to file regular reports of actual involvement in the counseling process. This report shall show dates and times of involvement along with supervisory evaluation of the student's progress. All practicums require prior approval.

PCC790-798 COOPERATIVE EDUCATION. Individually-approved learning experiences with preparatory readings, regular reports and close supervision in an appropriate professional setting such as a church, social agency or other counseling environment.

PCC799 DISSERTATION. This course is taken for fifteen semester credit hours (15 SCH) for the dissertation project. The dissertation is to be of a length and scope which are commensurate with a rigorous and scholarly treatment of the subject. Special instructions are available through your Academic Advisor.

CHRISTIAN EDUCATION

EDU201 INTRODUCTION TO EDUCATION. Survey of American education. Attention given to the organization of school systems and to teaching as a profession.

EDU209 TEACHING ELEMENTARY MATHEMATICS. This course is designed to provide significant insight into the information which teachers need to teach mathematics effectively in the classroom.

EDU210 TEACHING SECONDARY MATHEMATICS. Introductory course on the lesson preparation and presentation of math, algebra, and geometry at a secondary level.

EDU245 TEACHING ELEMENTARY HISTORY. This course is designed to give foundational skills for teaching history and emphasizes the teaching of United States history and government to elementary students.

EDU303 CHILDREN'S LITERATURE I. An introduction to children's literature, featuring study of award-winning children's books and the literary characteristics which provide interesting and educational reading.

EDU304 CHILDREN'S LITERATURE II. A continuation of EDU303.

EDU305 FOUNDATION OF EDUCATION. To help prospective teachers better understand their chosen career by exploring the issues, themes, and ideas which are pertinent to professional education.

EDU306 METHODS OF INSTRUCTION IN READING. Overview of current instructional practices and techniques for teaching reading in the contemporary school.

EDU308 EFFECTIVE METHODS FOR COMMUNICATING WITH CHILDREN. A study revealing effective techniques in understanding, communicating with, and teaching children.

EDU310 TEACHING ELEMENTARY LANGUAGE ARTS. Study of content, methods, and materials used in teaching listening, written expression, reading, spelling, grammar, and handwriting skills.

EDU311 THE ETHICS OF TEACHING. Study of the ethical issues and dilemmas in the teaching profession.

EDU312 CHILD PSYCHOLOGY I. A study of the physical, social, intellectual and moral development of the child; human dynamics including language, personality, motivation, cognition, and perception.

EDU313 CHILD PSYCHOLOGY II. A continuation of EDU312.

EDU314 TEACHING SECONDARY LANGUAGE ARTS. Study of content, methods, and materials used in teaching listening, written expression, reading, spelling, grammar, and handwriting skills in middle school.

EDU320 TEACHING SECONDARY HISTORY. Study of methods and techniques for teaching history in junior and senior high schools.

EDU331 INTRODUCTION TO CHRISTIAN EDUCATION. Provides an overview to beginning students regarding the nature and scope of Christian education and provides a foundation for further study in Christian education.

EDU332 PRINCIPLES OF CHRISTIAN EDUCATION I. A study of the distinctive philosophy and principles operative in the field of Christian Education. This course provides insight and direction for principals, pastors, school board members and others working with Christian schools.

EDU333 PRINCIPLES OF CHRISTIAN EDUCATION II. A continuation of EDU332.

EDU402 TEACHING ELEMENTARY SCIENCE. A study of concepts, materials, and methods needed to teach science on the elementary level.

EDU405 MEASUREMENT AND EVALUATION. A study of the role of assessment and evaluation in the instruction process, including writing instructional objectives, construction of the classroom tests, administration and interpretation of standardized tests. Current trends and issues in educational measurements are considered.

EDU408 EFFECTIVE TEACHING METHODS. Can be used for undergraduate or graduate students preparing to be teachers, or as a refresher course

for teachers. It explores goals, strategies, planning and objectives, as well as discipline and evaluation in the classroom.

EDU410 TEACHING ELEMENTARY SOCIAL STUDIES. Intended for undergraduate students taking first courses in teaching elementary social studies. In-service teachers and graduate students will find this course useful.

EDU411 TEACHING SECONDARY SOCIAL STUDIES. A materials and methods course demonstrating the teaching of social studies in junior and senior high schools.

EDU412 TEACHING SECONDARY SCIENCE. A study of concepts, materials, and methods needed to teach science in junior and senior high school.

EDU415 EARLY CHILDHOOD EDUCATION. A study of the purpose, development, methods, organization, and implementation strategies in the contemporary elementary school, with specific consideration given to Christian elementary schools.

EDU416 TEACHING GIFTED AND EXCEPTIONAL CHILDREN. Examination of theories and characteristics of human behavior with special emphasis on the exceptional learner. Course will orient students to programs related to education of all types of exceptional children.

EDU426 STUDENT TEACHING PRACTICUM IN ELEMENTARY SCHOOL. Supervised experiences in observing, planning, directing, teaching and evaluating experiences of pupils leading to total responsibility for the instructional program in the elementary classroom. To earn nine semester credit hours (9SCH), all requirements must be completed within a nine week period.

EDU445 STUDENT TEACHING PRACTICUM IN SECONDARY SCHOOL. Teaching and observing in secondary schools; participating in extra-class duties, planning, directing, and evaluating experiences of pupils leading to total responsibility for the instructional program in secondary school classroom. To earn nine semester credit hours (9SCH), all requirements must be completed within a nine week period.

EDU446 STUDENT TEACHING PRACTICUM IN PHYSICAL EDUCATION. Teaching and observing in grades K-12; participating in extra-class duties, planning, directing, and evaluating experiences of pupils leading to a total responsibility for the instructional program in health and physical education. To earn nine semester credit hours (9SCH), all requirements must be completed within a nine week period.

EDU448 READING INSTRUCTION IN THE SECONDARY SCHOOL. To prepare secondary school teachers to teach content of their subject areas more efficiently and provide a strategy for content reading.

EDU450 APPLIED RESEARCH TOPIC. The role of individual research is an important element in the requirements for graduate education. Students will be expected to understand the forming of research questions and the appropriate methodology and techniques in the development of a research project and paper. Applied research projects require prior approval of the faculty chairperson.

EDU490-498 COOPERATIVE EDUCATION. Individually-approved learning experiences with preparatory readings, regular reports and close supervision in an appropriate professional setting.

EDU499 PRACTICUMS IN CHRISTIAN EDUCATION. These practicum provide the student greater exposure to practical hands-on-training as they complete their required course work. A practicum requires that the student be actively participating in an organized educational facility under an approved supervisor, for a period of nine weeks. The student is required to file regular reports of actual involvement along with supervisory evaluation of the student's progress. All practicums require prior approval and regular contact with the faculty chairperson.

EDU501 TEACHING SPECIAL EDUCATION. Course to orient prospective teachers to characteristics and problems related to education of mildly disabled children. Specific emphasis on mainstreamed exceptional individuals.

EDU502 HISTORY OF AMERICAN EDUCATION. The history of the development of elementary, secondary and higher education in the United States from the Colonial period to the present.

EDU504 CHILD DEVELOPMENT. This course is designed to review the principles for building a secure, nurturing family atmosphere that grows strong responsible children and explores the stages of child development.

EDU505 TEACHING SECONDARY SCIENCE. Study of lesson preparation, methodology, and facilitation in the field of science.

EDU507 FOUNDATIONS OF EDUCATION. This course provides primary source material for students entering the field of Christian education and provides foundation and perspectives to help the student become familiar with the basic process of Christian Education.

EDU511 SECONDARY TEACHING METHODS. Study of currently identified strategies in which competence is necessary. The techniques, materials, and methods found to be effective for improved learning in the secondary school are examined.

EDU512 SCHOOL ADMINISTRATION. A course designed to focus on both the internal and external roles of the principal. A plenary study of the tasks of Christian school administration.

EDU513 DEVELOPING TEACHING SKILLS. This course is designed to emphasize teaching skills and to provide a sound perspective on improving the effectiveness of student thinking. Guidelines are offered for the day-to-day instruction aimed at the improvement of student thinking skills and abilities. By using the ideas presented in this course, the student will be able to enhance thinking in the classroom and beyond.

EDU515 EDUCATIONAL ADMINISTRATION. This course explores the fundamental principles of effective administrative leadership, including the need to effectively manage the process of collaboration and enhancement of the education process.

EDU526 THE SUCCESSFUL CHRISTIAN SCHOOL. Foundational principles for organization and administration of a successful Christian school. Specific biblical philosophy pertinent to the impact of Christian Education and models of effective Christian schools.

EDU535 ADOLESCENT PSYCHOLOGY. This course helps youth workers, counselors, pastors and teachers gain valuable insight into the different struggles of adolescents and how to help them gain victory over these struggles.

EDU540 SUPERVISION OF SCHOOL PERSONNEL. Principles and practices of administration as it concerns selecting and retaining qualified school personnel; placement, evaluation, salaries, benefits, maintenance, morale, and staff development.

EDU542 INFLUENCES ON AMERICAN EDUCATION. A look at the history of American Education. It also explores the current education system which has evolved into an increasingly secular and morals-neutral experiment. The course also demonstrates how humanism has pervaded the public school system and gained philosophical dominance in that setting.

EDU544 DEVELOPING THE CURRICULUM. A study in the principles and current practices of curriculum development in schools and an exploration of emerging, effective strategies to enhance that process.

EDU545 EDUCATIONAL RESEARCH. An introduction to the methods, strategies and appropriate outcomes of educational research.

EDU550 GUIDANCE AND COUNSELING. This course is designed to acquaint the student with the aspects of counseling.

EDU555 APPLIED RESEARCH TOPIC. The role of individual research is an important element in the requirements of graduate education. Students will be expected to understand the forming of research questions and the appropriate methodology and techniques in the development of a research project and paper. Applied research projects require prior approval of the faculty chairperson.

EDU589 WRITING PROJECT. Every Master level student not completing a Master's thesis must complete a twenty-five (25) page writing project. This project must exhibit originality and thoroughness of research and be of quality acceptable to the faculty advisor. Complete instructions are available through your Department Dean.

EDU590-598 COOPERATIVE EDUCATION. Individually-approved learning experiences with preparatory readings, regular reports and close supervision in an appropriate professional setting.

EDU599 THESIS. This thesis project is taken for six semester credit hours (6 SCH). Thesis credit is not awarded until the thesis is completed and accepted.

DOCTOR OF PHILOSOPHY IN SCHOOL ADMINISTRATION

Doctoral study at LBU adds to an already established field of knowledge through Educational Research, Readings in Education, and Educational Practicums. The student's course of study will be flexible in design so as to meet his/her particular needs, taking into account his/her academic preparation and experience. Suggested topics will need to be approved by the faculty advisor.

SUGGESTED AREAS OF READINGS AND RESEARCH

EDU615	Current Issues in Education
EDU620	History and Philosophy of Christian Education
EDU625	Library Development for Christian Schools
EDU635	Principles of Methods and Instruction
EDU640	Developing an Effective Staff
EDU645	Educational Leadership
EDU650	Interpersonal Relationships
EDU655	Special Education
EDU660	Computer Applications in Education
EDU675	Instruction of Language
EDU680	Instruction of Math
EDU685	Instruction of Science
EDU690	Instruction of Social Studies

EDU780 APPLIED RESEARCH TOPICS. The role of individual research is an important element in the requirements of graduate education. Students will be expected to understand the forming of research questions and the appropriate methodology and techniques in the development of a research project and paper. Applied research projects require prior approval of the faculty chairperson.

EDU785 READINGS IN CHRISTIAN EDUCATION. This is an independent reading course taken in conjunction with other assigned courses. A student will work with his or her chairperson in developing the bibliography and draft a comprehensive literature review. The readings course may be taken upon approval of the faculty chairperson.

EDU799 DISSERTATION. This course is taken to provide fifteen semester credit hours (15 SCH) for the dissertation project. The dissertation is to be of a length and scope which is commensurate with a rigorous and scholarly treatment of the subject. Special instructions are available through your faculty advisor.



CHA202 CHURCH AND PERSONAL FINANCE. Course designed especially for the new pastor or missionary who is starting a new church. It is also appropriate for the experienced pastor with little or no training in financial management and bookkeeping.

CHA203 INTRODUCTION TO CHURCH MARKETING. A study of the methods for the development and execution of a marketing plan within the church environment, with an emphasis on the need to develop a marketing philosophy within the local church or parish.

CHA205 STRATEGIC PLANNING. Designed for pastors and church administrators, this course explores the various aspects of strategic planning and provides a sample strategic plan. The student is introduced to material that is both theoretically sound and practically applicable.

CHA320 CHILDREN'S MINISTRY I. Teaches the student how to create an effective Christian Education program and help children grow spiritually. You will explore children's developmental stages, developing curriculum, planning activities, and setting goals for specific age groups from birth through age 12.

CHA321 CHILDREN'S MINISTRY II. A continuation of CHA320 and includes techniques for outcome assessments.

CHA412 SUNDAY SCHOOL ADMINISTRATION. This course includes a comprehensive study of the Sunday School with emphasis on the management techniques that can be utilized by the pastor; the duties and responsibilities of the pastor, and the duties and responsibilities of other professionals and laymen are explored.

CHA415 CHURCH DEVELOPMENT. A definitive review of the role of the church in the twenty-first century, along with projections regarding the future of the church.

CHA518 CHURCH MARKETING DEMOGRAPHICS. A study of the population trends and placement and their significance for church development.

CHA421 CHURCH ADMINISTRATION. The effective and efficient operation and management of a church is considered. Topics include: personnel selection, maintenance, membership services and development, long-range planning, finances and church growth.

CHA490-498 COOPERATIVE EDUCATION. Individually-approved learning experiences with preparatory readings, regular reports and close supervision in an appropriate professional setting.

EDUCATIONAL MINISTRIES

EDM120 INTRODUCTION TO EDUCATIONAL MINISTRIES. This course would introduce the student to various educational ministries in the local church (Sunday School, weekly Bible Study, Discipleship, Ladies & Men's ministries, VBS, etc.). The class would also cover basic and historical foundations.

EDM220 TEACHING IN EDUCATIONAL MINISTRIES. This course would equip students to become better and effective teachers in all areas of the church's educational ministries by using Jesus as the Master model. Students will learn how to develop lessons from scriptures for preschool, children, youth and adults.

EDM230 DISCIPLESHIP, THE KEY TO GROWTH. This course will explore the historic paths of discipleship from the early church through the projections of the future. Students will explore various Discipleship possibilities which will include video series, published materials, retreats, support groups, as well as family and gender related ministries.

EDM300 CREATIVE ARTS IN EDUCATIONAL MINISTRIES. This course will introduce students to the various forms of Creative Arts that can be used effectively in the church setting either in worship, in fellowship as well as outreach and missions. Students will be introduced to the areas of pantomime, choral speaking, fun dramas, puppets, skits, monologues, story telling, drama revivals, dinner theatres, as well as pageants and patriotic services. This course will also help teachers for all age groups to expand their creative teaching abilities.

EDU310 AGE GROUP CONCENTRATIONS. This course will teach the different learning styles and psychology of each age group. Students will also learn how to exam curriculum and development new curriculum.

EDU320 HISTORY OF BIBLICAL EDUCATION. Over the years Biblical Education in the churches has innovated and expanded. Beginning with Sunday School many churches now offer various educational opportunities for their membership. This course discusses how to start and grow these educational programs.

ENGLISH

ENG101 ENGLISH COMPOSITION I. A course designed to teach correct and effective use of the language through expository writing and selected reading. This course places emphasis on the organization of multi-paragraph themes.

ENG102 ENGLISH COMPOSITION II. A continuation of English 101. Writing assignments are more complex, with special emphasis placed on rhetorical devices, variety of sentence structure, and diction. Extensive readings furnish models and source materials. The research paper and literary appreciation are included.

ENG105 SPANISH FOR ENGLISH. This course is designed to teach English speaking students conversational Spanish, primarily used for mission trips. Offered on-campus only.

ENG202 ENGLISH LITERATURE. A survey of English literature. Detail study of poetry, novels, and classics of English literature and the authors. This course requires an original writing project.

ENG203 AMERICAN LITERATURE. A survey of American literature. Detail study of poetry, novels, and classics of American literature and the authors. This course requires an original writing project.

ENG301 CREATIVE WRITING. While studying and practicing the tools of effective writing, the student is encouraged to apply the tools in an area of his own personal interest. Special attention is given to poetry, characterization, and other forms of imaginative writing.

HISTORY

HIS111 HISTORY OF THE UNITED STATES TO 1877. A general survey of the history of the United States from its settlement to the end of the Reconstruction.

HIS112 HISTORY OF THE UNITED STATES FROM 1877 TO PRESENT. A general survey of the history of the United States from Reconstruction to the present. Prerequisite: HIS111

HIS201 WORLD HISTORY I. This course is a survey of the major civilizations of the ancient and medieval world and their contributions to history. Concise histories of the Middle East, Asia, and Africa along with the development of western civilization from the earliest writings of ancient man to the emergence of modern Europe from medieval culture serve to provide the student a panoramic view of history. The course focuses on the religious, political, legal, and cultural aspects of the ancient, medieval, and early modern world as seen from a Christian perspective.

HIS202 WORLD HISTORY II. Beginning with a treatment of the French Revolution and its ramifications, this course traces the emergence of the modern world. Emphasis is placed on the rise and influence of philosophies which have helped to shape modern history. In the final unit of study, the current geopolitical trends and events are analyzed in their historical context.

HIS203 STATE HISTORY. A study of the student's state history, culture, recreational areas and industries.

HIS401 CHURCH HISTORY. A study of the New Testament church history. A consideration of the origin and development of the church, its scriptural foundations and history.

HIS501 ADVANCED CHURCH HISTORY I. A study of the early church and the distinguishing characteristics of a New Testament church.

HIS502 ADVANCED CHURCH HISTORY II. A continuation of the study of the development of the church with emphasis on defining and defending authentic, Bible-based doctrine.

MATHEMATICS

MTH101 FUNDAMENTAL MATH I. A general overview of basic college math.

MTH102 FUNDAMENTAL MATH II. A continuation of MTH101.

MISSIONS

While any of our mission courses may be taken through distance education, the Baptist Bible Fellowship International requires that certain mission courses be taken on-campus. Students with a mission major can now fulfill that requirement by attending special modular classes that are offered periodically on the LBU campus. This allows the mission student to complete their degree with only a minor interruption from their job.

MIS101 BIBLICAL BASIS OF MISSIONS. An introduction to the biblical concepts of missions: Biblical Foundations, Historical Developments, and Contemporary Issues.

MIS102 WORLD MISSIONS. This course gives a general overview of world missions today. Attention will be given to the Biblical basis of missions, the missionary call and the responsibility of the local church.

MIS201 CHURCH AND MISSIONS. This class provides an overview of missions from the perspective of the missionary, the church, and the sending pastor. Particular attention will be given to the mission of the local church.

MIS306 THEOLOGY OF MISSIONS. This course addresses the issues fundamental to Missions in our time. The course is also designed to present a broad biblical and theological affirmation of missions.

MIS307 CROSS CULTURAL COMMUNICATION. This course will demonstrate how to avoid being cultural imperialists and instead become authentic ambassadors for Christ.

MIS310 MISSIONARY LIFE AND WORK. An historical survey of missionary work on the home and foreign fields that provides an understanding of the strategies for the development of international missions efforts.

MIS401 CHURCH PLANTING. Designed to address the requirements for starting a parish or congregation. It also provides practical answers to the questions of “How To” and “Where To” start a new church and supplies wise counsel and a comprehensive check list.

MIS410 CULTURAL ANTHROPOLOGY. Designed to acquaint the missions student with different aspects of ministering to cross-cultural groups and bridging the gulf of historical, anthropological and cultural differences.

MIS412 MISSIONARY PRACTICUM. These courses are designed to acquaint the missionary family with the field to which God has called them and include supervised, practical experience in an appropriate missions setting.

MIS414 PREPARATION FOR LIVING ABROAD. This course is designed to be the capstone of the missions program discussing the issues involved in living overseas and filling in any gaps the student may still have from the prior courses.

MIS415 CULTURAL PLANTING. A study of man’s behavior from a theological view. This course shows that persons are worthy to be treated as the Creation of God and that they are also worthy to be benefactors of the reception of the Gospel of Christ.

MUSIC

MUS101 EVANGELISTIC SONG LEADING. Introduces the patterns of song leading, the proper technique of starting and ending a song, how to observe a musical fermata and how to direct an ad lib hymn. Discusses evangelistic songleading, rehearsal tips, and improving singing dynamics of the congregation.

MUS103 INTRODUCTION TO MUSIC THEORY. This course introduces the students to all the basics of music theory and prepares them for Music Theory II and III.

MUS201 MUSIC THEORY I. Teaches the student the basics of theory and progresses through stances, note names, rhythmic names, and scales.

MUS301 MUSIC THEORY II. This course begins with the theoretical basis for intervals and progresses through chords, cadences, nonharmonic tones, chord progressions and then into four-part writing.

MUS305 BAPTIST HYMNODY IN AMERICA. This course studies the history of the music of the Baptist church. Provides an introduction of the primary writers and how the music style has evolved.

MUS306 UNDERSTANDING CHURCH SOUND. An introduction to the use of electronic sound equipment (terminology, design, brands) including recording (analog and digital). The student will also be introduced on how to program sequencers to control electronic keyboards and the use of computers to control equipment.

MUS405 HYMNOLOGY. A history of the development of the hymn as a form of worship from ancient times to the present. This course is an enabling source of information for the serious music director.

MUS410 IMPROVISIONAL PIANO PLAYING. Teaches the student how to improvise hymns and Gospel songs in an evangelistic style. The student learns runs, breaks, fill-ins, right hand techniques, left hand techniques, introduction, and endings. The student also learns how to arrange a song for solo performance in a church/evangelistic setting.

MUS420 VOICE. This course features textbook and two DVDs prepared by Dr. Robert Clark. "Bobby" Clark was the original tenor of the Cathedral Quartet and has trained at the Metropolitan and Orlando operas.

MUS425 SINGERS TOOL KIT. This course deals with three main topics; singing with rhythm, singing with tone and singing with phonation. The course covers nearly 20 subtopics such as keeping a steady beat, reading note and rest values matching and recalling pitches, placing pitches on staves, acquiring tonus, creating vocal sounds and 12 more subtopics. *

MUS450 INSTRUMENTAL CONDUCTORS TOOL KIT. This course is a church leadership-training course that provides tools for instrumental conductors to generalists and specialists. There are four basic components of instrumental conducting. Those components are: song, instrument, technique and musician. Comes with instruction book and DVD. *

MUS455 CHORAL CONDUCTORS TOOL KIT. This course is the practical application of choir directing skills developed in a sacred music setting. Students are taught to organize, prepare and conduct a choir. Comes with instruction book and DVD. All three tool kit courses may be taken at either undergraduate or graduate levels. *

MUS512 PLANNING A WORSHIP SERVICE FOR THE 21ST CENTURY. Topics include: What is the role of the worship leader?, how to choose music, the role of drama, and the use of multi-media in worship. Students will study the planning process that includes prayer, listening to God's direction, and an understanding of how music, drama and multi-media relate.

MUS520 INTERN INSTRUCTION I. Observation and teaching of piano, voice, or guitar students in group and private settings.

MUS521 INTERN INSTRUCTION II. Observation and teaching of piano, voice or guitar students in group and private settings.

MUS522 PIANO PEDAGOGY. Principles of good piano teaching methods as they apply to the private lesson. A survey of the various schools of piano technique, business procedures, and studio policies.

MUS523 VOICE PEDAGOGY. Materials, methods, and procedures used in the teaching of the basic principles of vocal production as applied to the individual and to groups. Posture breathing, tone, diction, and phrasing.

MUS524, 525 SPECIAL PROJECTS IN FINE ARTS. Projects may include music, drama, art, video production, and sound design.

MUS560 HISTORY OF MUSICAL SOUND. The student will trace how musical sound has evolved from its earliest form through the centuries into its modern forms. The student will be exposed to a broader scope of knowledge expected in graduate level course. (6 hours)

MUS562 ARRANGING. In this course the student is expected to take already established songs and rearrange them by changing the tempo or melody. The student may also incorporate several songs into a medley.

MUS565 COMPOSING. The student must compose original songs both lyrics and music. To receive credit, present a performance CD or DVD and sheet music for each song.

MUS566 CONDUCTING. The student must present a 15-minute performance tape showing their self-conducting a choir, orchestra or praise team. If the student has completed MUS565 Composing, it is preferred that they use some of their original material but not required. Prerequisite: MUS455 Choral Conductors Tool Kit.

MUS570 THE ROLE OF CLASSICAL MUSIC ON EUROPEAN CULTURE. A study of how classical music influenced European culture and what if any of that influence has affected America. Requires a study of great European composers and various types of classical music.

FINAL PROJECT

MUS599 RECITAL. The recital is an important element in the education of all music students. This should be a well-planned, well-produced recital of at least 30 minutes. It can be instrumental or vocal and the student can be reinforced with other instrumentalist or back-up vocalists. May be performed before a small select group or before a church congregation. To receive credit the student must present the performance on either videotape or DVD.

* MUS425, MUS450, and MUS455 may be taken at Master level as MUS525, MUS550, and MUS555.

APPLIED LEARNING

MUS110,210,310 PERFORMANCE PRACTICUM. This practicum seeks to provide talented musicians the opportunity to earn academic credit by using those talents through musical presentations in churches, schools and auditoriums. Course may be repeated four times, as shown.

MUS111,211,311,411 PRIVATE LESSONS. Allows the student to take private lessons that may be applied toward college credit. The student is assigned a performance level and is required to present various criteria to verify appropriate progress. Course may be repeated four times, as shown.

MUS406 SERVICE PLAYING. This course requires areas of ecclesiastic service in which improvisational keyboard skills are required, such as accompanying offertories, choir specials, and other functions.

SCIENCE

BIB, SCI417 THE BIBLE AND SCIENCE. The purpose of this course is to provide a greater appreciation for both science and the Bible and to make it clear that no compromise is necessary in order to bring the authentic facts of science into harmony with the teachings of the Bible. May be used as either a Bible or science course.

SCI101 GENERAL BIOLOGY I. A course presenting the basics of the life sciences, including an introduction to living organisms, chemical and physical basis of life, biological principles and concepts and a survey of the plant and animal kingdom. Study of life processes in plants and animals, nutrition, respiration, circulation, excretion, motion, response, growth, and reproduction. Designed to provide a broad overview of the life sciences.

SCI102 GENERAL BIOLOGY II. A continuation of SCI101.

SCI214 SCIENTIFIC CREATIONISM. A course designed to demonstrate that authentic science supports rather than refutes creationism, using materials from distinguished scientists and theologians.

SCI311 BEGINNINGS UNDER ATTACK. This course takes up the defense of the first eleven chapters of the book of Genesis. Valid questions will be answered such as: Are the first eleven chapters in Genesis symbolical or literal? Does true science contradict God's truth? Is there a literal personality called Satan? Was there truly a worldwide flood? A defense against the many attacks on the truths will be presented in this course.

SCI314 CREATION SCIENCE. A further survey of the scientific facts which support creationism, using materials from distinguished scientists and theologians.

SCI317 HISTORY OF MODERN CREATION. A study of the principles and individuals who have defended the scientific and theological basis for creationism.

SCI500 CREATION EVIDENCES FOR BIBLICAL CHRISTIANITY. In this course, the student will explore the biblical and scientific evidence for the Bible's divine inspiration and authority.

SOCIAL STUDIES

BIB203 BIBLE ATLAS. A study of the comprehensive Bible Atlas; may be used as either a Bible or geography course.

SST203 WORLD GEOGRAPHY. A study of the nations and peoples of the world in reference to major regions and their location, climate, culture, economics, language, religion, government, challenges and world importance.

SST311 NATIONAL GOVERNMENT I. A survey of the origins, principles, and development of the Constitution of the United States, and functions performed by the Federal government.

SST312 NATIONAL GOVERNMENT II. A survey of form, structure, functions and problems of democratic government emphasizing the application knowledge of government for potential solutions for the basic challenges in achieving effective self-government.

SST401 PRINCIPLES OF SOCIOLOGY. Human social relationships and processes; functioning of familial, recreational, religious, economic, political, and other social groups.

SST402 SPECIAL RESEARCH IN SOCIAL STUDIES. Research related to man and his environment including comparative study of cultures, geography, history, economics, government, education, or religion. Subject material must be approved by advisor.

SST502 SPECIAL RESEARCH IN SOCIAL STUDIES. Graduate level extension of SST402.

SPEECH

SPE105 INTRODUCTION TO HOMILETICS. The theory and practice of planning, constructing, and delivering the sermon is the focus of this course. A thorough study of the various types of sermons and their preparation is conducted.

SPE301 FUNDAMENTALS OF SPEECH. A course which explores the principles of effective oral communication in typical speaker-audience situations, through practice in informative and persuasive speaking. Focus is on developing advanced skills in special occasion speeches, the book review, the entertaining speech, and effective reading from an original speech.

STUDENT MINISTRY

STM200 PHILOSOPHY OF STUDENT MINISTRIES LEADERSHIP. This course is designed to help students develop needed skills and competence in providing leadership for youth ministries in the development of a philosophy of ministry, identifying the specific needs of a youth group, understanding the capabilities of a ministry team and designing programming based on those factors.

STM210 BIBLE-BASED STUDENT MINISTRY. A refreshing return to student ministry that is truly Biblically based. Counter to the popular trend in student ministry of entertainment and crowd building. It offers a call to instruct to students to “grow deep” in their discipleship and “go wide” in evangelizing their friends. Focus on biblical values for student ministry as opposed to passing fads.



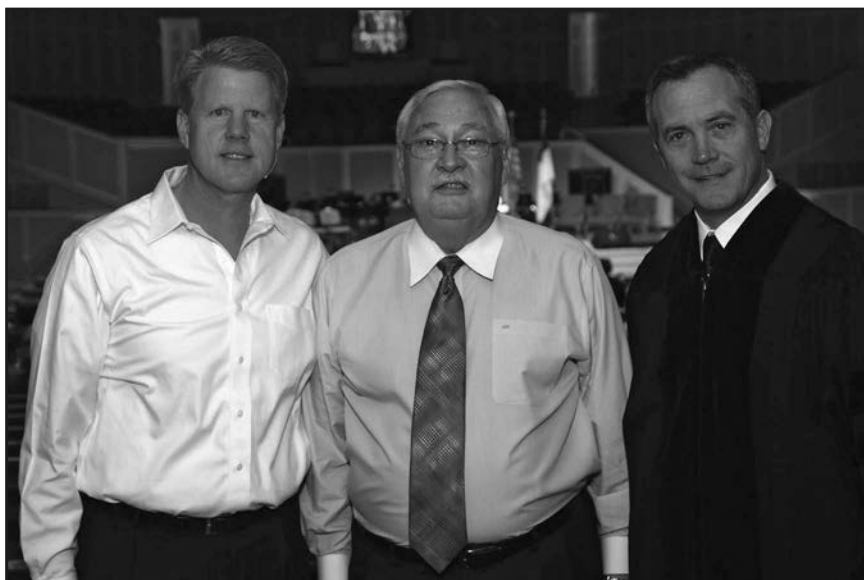
STM230 EFFECTIVE & PRACTICAL STUDENT MINISTRY. A very practical study on the “how to’s” of successful student ministry. Areas of focus are: dealing with discouragement, building effective relationships with students and parents, resolving conflict, trailblazing change, working with volunteers, developing a realistic job description and many others. A great course for student ministers, volunteer workers, pastors, and anyone interested in building an effective student ministry.

STM 330 FOUNDATION FOR STUDENT MINISTRY. A course designed to equip those who want to enhance their understanding of the local church student ministry. This course provides excellent background for the full-time student minister and the volunteer youth leader.

STM340 ADOLESCENT PSYCHOLOGY. Designed to examine the complex characteristics of human cognitive and emotional life during the period of adolescence. Emphasis is on basis of behavior, interpersonal relationships, development, growth, and motivation.

STM 410 FIELD EDUCATION INTERNSHIP. Supervised 4-month experience as an intern under an established minister to students. Monthly 5-page report of time, activities, outcome, and principles learning is required. Also available to established student ministers with same report requirements.

STM 490 STUDENT MINISTRY COOPERATIVE EDUCATION. Individually approved learning experiences available at conferences, workshops, and seminars on effective contemporary student ministry. Application/Approval and 10-page writing assignment of learning outcome is required.





T

Theological Seminary Division

Thomas Brock
Associate Dean



THEOLOGICAL SEMINARY DIVISION

Many ministers need to continue to serve God in their current place of ministry. Relocating to complete their theological education is not an option. Louisiana Baptist Theological Seminary is committed to providing excellence in theological education through distance learning. Thousands of people who have answered God's call to ministry have discovered the advantages of staying where they are and completing their theological training through distance education.

MISSION STATEMENT

The Mission of Louisiana Baptist Theological Seminary is to provide biblically conservative, academically challenging, culturally relevant, and financially affordable preparation for a new generation of Christian ministers.

OBJECTIVES FOR CARRYING OUT THE MISSION:

- To create alternative graduate-level opportunities for pastors, missionaries, evangelists and other Christian professionals.
- To offer nonresident studies comparable to resident programs in rigor and learning outcomes through the tutorial supervision of a qualified faculty.
- To enable experienced mid-career, self-motivated ministers to earn advanced degrees without leaving their present ministries.
- To enhance professional competency through a deeper understanding of biblical-theological truth and its application in all facets of ministry.
- To maximize advantages of students engaged in bi-vocational ministry.
- To prepare Christian professionals for ministries in all areas.

THE VALUE OF INDEPENDENT RESEARCH

In both the masters and doctoral levels, students are not only allowed, but *encouraged* to consider independent research. Independent research is when a student selects a topic of interest or a subject in which his educational skills are lacking (sometimes a need within the church prompts this realization) and he contacts the dean for approval and clarification for what must be done to receive course credit before proceeding.

The value of independent research is it allows a student to help customize his curriculum so as to receive maximum benefit from the learning experience. Further it is similar to real-world applications in which a person coming into a new role must determine for himself what information and skills he must acquire to perform at his best.

MASTERS DEGREES

Louisiana Baptist Theological Seminary offers two types of Master's Degree Programs, a shorter 36 semester hour Master of Ministry program and a more comprehensive Master of Divinity Program.

Both masters programs offer flexibility within the program. In the shorter Master of Ministry the student can choose a theology concentration or a ministry concentration. In the more comprehensive Master of Divinity the student can choose the Military Chaplaincy concentration or the Church Ministry concentration.

MASTER OF MINISTRY

LENGTH AND CONTENT

The Master of Ministry degree is a 36 semester hour program designed to enhance the effectiveness of those who are currently engaged in vocational and bi-vocational ministries. Course content is directed toward immediate application to real ministry. Curriculum is structured to provide appropriate balance between academic challenge and practical value for student in meeting the ministry needs of people in a local church.

MINISTRY STUDY OPTIONS

Ministry electives permit students to pursue graduate level study in pastoral ministries, counseling, and evangelistic ministry, as well as other areas of ministry. Students discover both the timeless truths and cutting edge methods for meeting needs in various ministry settings.

STUDY CONCENTRATION OPTIONS

Students may choose between two options within the Master of Ministry, the theology concentration or the ministry concentration. Both concentrations are designed to prepare the student for ministry in a local church setting.

MASTER OF DIVINITY

LENGTH AND CONTENT

The Master of Divinity degree designed to equip the student with relevant theological skills necessary to serve as senior pastor, or in any support role within a local church or broader ministry position. The curriculum is sufficiently comprehensive to address all necessary areas of theological inquiry for contemporary ministry. Course content provides academic stimulation and the practical value necessary for meeting ministry needs of people in a local church.

COURSE AND STUDY OPTIONS

In addition to prescribed courses, students are encouraged to pursue independent studies, as approved by the Dean. Modular courses and workshops offered on campus are available as elective credits.

STUDY CONCENTRATION OPTIONS

Students may choose between two options within the Master of Divinity degree, the church ministry option and the military chaplaincy option.

MASTER'S LEVEL COURSES

Seminary Course Explanation Guide

BI – Bible
CL – Christian Leadership
CM - Communication
CN - Counseling
DS - Discipleship
HI - History
MI - Missions
PC - Practicums
PR - Prophetics
RE – Religious Education
TH – Theology

- The 2 letter prefix indicates the general area of study
- The 3 number digit indicates the level of study
- 500 Master's level course work
- 600 Advanced Master's level, also suitable for some Doctoral courses
- 700 and above Doctoral level course work

Example the course: **BI500 Hermeneutics** is a Master's level Bible course

Because:

BI indicates this is a Bible course

500 indicates it is a Master's level course

BIBLICAL STUDIES - BI

BI500 HERMENEUTICS. An introductory study of the method of interpreting the Scriptures with primary emphasis on the historical grammatical method of interpretation.

BI501 OLD TESTAMENT INTERPETATION I. A study of the books of Genesis through Ezra including careful analysis of the biblical text, discovery of the special features and a synopsis of each book.

BI502 OLD TESTAMENT INTERPETATION II. A study of the historical, poetic, and prophetic books of Nehemiah through Lamentations including careful analysis of the biblical text, as well as discovery of the special features and a synopsis of each book.

BI503 OLD TESTAMENT INTERPETATION III. A study of the prophetic books of Ezekiel through Malachi including careful analysis of the biblical text, as well as discovery of the special features and a synopsis of each book.

BI504 BIBLICAL INTRODUCTION. An examination of the authorship, background, and history of each book of the Bible.

BI505 NEW TESTAMENT INTERPETATION I. A study of the inter-testamental period, four gospels, and Acts including careful analysis of the biblical text, discovery of the special features and a synopsis of each book.

BI506 NEW TESTAMENT INTERPETATION II. A study of the Pauline Epistles, General Epistles, and Revelation including careful analysis of the biblical text, as well as discovery of the special features and a synopsis of each book.

BI507 ANALYSIS OF REVELATION. An analytical study of the book of Revelation, including a detailed outline emphasizing historical grammatical interpretation.

BI508 NEW TESTAMENT INTRODUCTION. An overview of the entire New Testament and its historical background beginning with the inter-testamental period. An introduction to each of the New Testament books is examined.

BI509 ANALYSIS OF ACTS. An analytical study of the book of Acts, including a detailed outline emphasizing historical grammatical interpretation.

BI510 OLD TESTAMENT INTRODUCTION. An overview of the entire Old Testament and its historical background beginning with the Pentateuch through the Prophetic books. An introduction to each of the Old Testament books is examined.

BI511 COMPARATIVE RELIGIONS. A careful analysis of the world's religions with special emphasis on comparing and contrasting the basic beliefs of those religions to traditional evangelistic Christian beliefs.

BI514 DISPENSATIONALISM. A clear and systematic presentation of the dispensational interpretation of Scripture from a historical grammatical understanding of the Bible.

BI519 SEMINARY WRITING PROJECT. An advanced writing course offered as an alternative to students who choose to forego writing a master's thesis by taking extra course work and completing the writing project.

CHRISTIAN/CHURCH LEADERSHIP - CL

CL501 INTRODUCTION TO PASTORAL MINISTRY. A comprehensive study of many aspects of pastoral ministry with a view toward practical application of ministry roles and activities in a twenty-first century setting.

CL503 PASTORAL CHURCH ADMINISTRATION. A comprehensive and practical guide to understanding the challenges facing the task of local church administration.

CL504 PASTORAL MINISTRY FOR CHAPLAINS. A comprehensive study of many aspects of pastoral ministry with a view toward specific application to the distinctive ministry role of the military chaplain.

CL505 CHURCH PROGRAM ADMINISTRATION. An introductory guide to administering a complete program of discipleship within the local church.

COMMUNICATION – CM

CM500 RESEARCH METHODS. A course designed to provide guidance for the student in the required format and Seminary standards in writing a Masters thesis.

CM501 HOMILETICS. An introductory study using eight time-proven steps to develop sermons from sermon idea to completed sermon.

CM502 HOMILETICS II. A study of principles that strengthen preaching skills and allow preachers to critically analyze their own strengths and weaknesses.

CM503 EXPOSITORY PREACHING. An analytical study of the techniques involved in developing biblical expository sermons.

CHRISTIAN COUNSELING – CN

CN500 INTRODUCTION TO COUNSELING. A broad overview of the philosophy, concepts, and specific areas of Christian counseling.

CN502 CRISIS COUNSELING. A comprehensive study of trauma and crisis counseling addressed from a Christian perspective.

CN505 MARRIAGE AND FAMILY COUNSELING. A thorough study of marriage and family counseling from a Christian ministry perspective.

CN508 FAMILIES IN CRISIS. An analytical study of biblical principles that equip ministers to help families in crisis face the difficulties that would otherwise destroy the family.

DISCIPLESHIP – DS

DS500 SPIRITUAL LIFE. A devotional study designed to help the student better understand the person and work of the Holy Spirit in his life and ministry.

DS503 POST MODERN EVANGELISM. An approach to evangelistic outreach that recognizes the challenges and difficulties that conscientious ministers face in the twenty-first century.

HISTORY – HI

HI501 BAPTIST HERITAGE AND HISTORY. A broad comprehensive study of the history and the heritage from which Baptists developed.

HI502 CHURCH HISTORY I. A general introduction to the history of the church from the time of its inception to the time of the middle ages.

HI503 CHURCH HISTORY II. A general introduction to the history of the church from the time of the middle ages to the present.

MISSIONS – MI

MI500 INTRODUCTION TO MISSIONS. A general introduction to Christian missions and the role of the local church in world missions.

MI501 THEOLOGY OF MISSIONS. A biblical-theological foundation for the necessity of mission endeavors propagated through the local church.

MI502 INDIGENOUS CHURCH PLANTING. A comprehensive guide to planting a local church in a culture other than the native culture of the student.

MI503 LEARNING TO PRAY FOR WORLD MISSIONS. A course that provides the student an organized and systematic method for praying for world missions in a meaningful way.

MI504 COMMUNICATING THE VISION FOR MISSIONS. A course that provides a simple, easily communicated strategy for communicating a vision for world missions to a local church.

MI505 LEADING A SHORT TERM MISSION TRIP. A course that provides specific guidance in both the administrative and spiritual aspects of leading a short-term mission trip.

MI506 CULTURAL ANTHROPOLOGY. A general introduction to the cultural and anthropological issues involved in effective missionary work.

MI507 MISSIONARY BIOGRAPHIES. A devotional study of the life of great missionaries as described by their biographers.

MI508 FOCUSED INDIVIDUAL STUDY IN MISSIONS. A focused individual study by the student of a specific ethnic group or country as agreed upon with the dean.

MI600 PLANTING CHURCHES CROSS CULTURALLY. An advanced study in church planting outside the student's native culture.

PRACTICUMS - PC

PC500-501 MASTER OF MINISTRY PRACTICUM. A ministry activity (practicum) that requires the student to engage both himself and others in an on-going ministry program that he, the student, has designed and implemented for a minimum of 15 continuous weeks.

PC502-503 M DIV MILITARY CHAPLAINCY PRACTICUM. A ministry activity (practicum) that requires the student to engage both himself and others in an on-going ministry program involving ministry to military personnel and their families that he, the student, has designed and implemented for a minimum of 15 continuous weeks.

RELIGIOUS EDUCATION - RE

RE500 CHRISTIAN EDUCATION IN THE CHURCH. A comprehensive, introductory study of Christian education in the church.

RE504 YOUTH MINISTRY. An introductory study of ministry to youth in the church.

RE505 CHILDREN'S MINISTRY. A comprehensive guide for building a strong ministry to children in the church

RE507 TEACHING THE BIBLE. A thorough and specific guide for teaching the Bible in the church.

RE600 MINISTRY WITH FAMILIES. A broad, comprehensive study of effective methodologies in ministering to families in the church.

THEOLOGY - TH

TH501 SYSTEMATIC THEOLOGY I. An introductory study of systematic theology in which the two disciplines of Theology proper and Bibliology (Study of Scriptures) are considered.

TH502 SYSTEMATIC THEOLOGY II. An introductory study of systematic theology in which the three disciplines of Angelology (Study of Angels), Anthropology (Study of Humans) (from a theological perspective), and Hamartiology (Study of Sin) are considered.

TH503 SYSTEMATIC THEOLOGY III. An introductory study of systematic theology in which the two disciplines of Christology (Study of Christ) and Soteriology (Study of Salvation) are considered.

TH504 SYSTEMATIC THEOLOGY IV. An introductory study of systematic theology in which the two disciplines of Pneumatology (Study of Holy Spirit) and Ecclesiology (Study of Church) are considered.

TH505 SYSTEMATIC THEOLOGY V. An introductory study of systematic theology in which the discipline of Eschatology (Study of Last Things) and Scriptures which are central to theological discussion are considered.

TH509 BASIC BAPTIST DOCTRINES. An introductory study of theological doctrines that are basic, though not necessarily unique to Baptists.

TH510 ETHICS. An introductory study of ethical issues that are commonly considered of fundamental importance by theologically conservative Christians.

TH515 APOLOGETICS. A comprehensive, systematic, and analytical study of Christian apologetics.

TH601 THEOLOGICAL CONCEPTS I. A general introduction to advanced study in theological concepts.

TH602 THEOLOGICAL CONCEPTS II. An advanced conceptual study of the doctrine of God.

TH603 THEOLOGICAL CONCEPTS III. An advanced conceptual study of the doctrine of man.

TH604 THEOLOGICAL CONCEPTS IV. An advanced conceptual study of the doctrine of salvation.

TH605 THEOLOGICAL CONCEPTS V. An advanced conceptual study of the doctrine of salvation—continued.

DOCTORS DEGREE

Louisiana Baptist Theological Seminary offers two types of Doctor's Degree Programs, a Doctor of Ministry and a Doctor of Philosophy.

Both doctors programs offer flexibility within the program. In the Doctor of Ministry the student can choose from four different concentrations and in the Doctor of Philosophy the students has three concentrations from which he may choose.

DOCTOR OF MINISTRY

PROGRAM DESCRIPTION

The Doctor of Ministry is an applied research degree designed for pastors and other ministers. The purpose of the program is to enhance the student's spiritual and professional skills by conceiving, designing, and carrying out an applied ministry project. Significant ministry experience (generally 3 years or more in that area of ministry) is required. The student is expected to conduct his applied ministry within the framework of the theologically conservative paradigm for which Louisiana Baptist Theological Seminary is known.



Program Requirements:

1. The Doctor of Ministry requires that the applicant be involved in a significant, church-related ministry position for a minimum of at least three years prior to application.
2. The Doctor of Ministry applicant must possess a Master of Divinity or equivalent ninety-hour degree from an institution recognized by LBTS.
3. The student must remain at his church or place of ministry throughout the time he is involved in the Doctor of Ministry Program or receive special permission from the Seminary Dean to complete the program at an alternate location.

STUDY CONCENTRATIONS OPTIONS

The student may choose from four separate concentrations within the Doctor of Ministry degree program: 1) Church Administration, 2) Evangelism/Missions, 3) Leadership, and 4) Preaching.

DOCTOR OF PHILOSOPHY

PROGRAM DESCRIPTION

The Doctor of Philosophy is a 60 semester hour terminal research degree in theological, ministerial, or religious studies which is designed for those who wish to have the most thorough training possible to fulfill God's calling.

The academic challenges of this degree program require that the applicant have at least a Master's degree (36 hours) from an institution recognized by Louisiana Baptist Theological Seminary.

Additionally the candidate must have demonstrated already significant ability to perform independent research and to present a scholarly analysis of the materials studied.

LEARNING CONTRACT

The Doctor of Philosophy program is designed to assist students who are pursuing advanced religious and theological studies in developing the skills necessary for a ministry of preaching, teaching, scholarly research, and writing.

STUDY CONCENTRATION OPTIONS

The student may choose from three separate concentrations within the Doctor of Philosophy degree, Theology, Religious Education, and Advanced Prophecies concentrations.

SPECIALIZED PROGRAM/ADVANCED PROPHETICS

Nearly 20 years ago LBU/LBTS established the Center of Advanced Prophecies under the direction of Dr. James Combs. Outstanding prophetic speakers and authors such as Grant Jeffrey, Chuck Missler, Gary Frazier and Jimmy DeYoung have all earned graduate degrees through our university or seminary.

LBU/LBTS continues to hold strong dispensational, pre-trib and pre-millennial viewpoints. Students interested in prophecies have the option of studying prophecy courses offered through LBU/LBTS or choosing to do their courses under the personal instruction of Dr. Jimmy DeYoung using the School of Prophets Institute curriculum.

Those students wishing to earn a degree in Advance Prophecies complete their course work through SPI, then complete their master level thesis or doctoral dissertation through LBU/LBTS and receive their degree through the university.

Students are not required to enroll with through LBU/LBTS and receive their degree through us.

Interested students should go to the SPI website www.schoolofprophets.com or call Jimmy DeYoung Ministries at 423-825-6247.

LBU/LBTS until they complete their courses work through SPI.

Doctoral Level Courses

BIBLICAL STUDIES - BI

BI700 HISTORICAL RELIABILITY OF THE GOSPELS. An analytical study of the reliability of the gospels encompassing historical criticism from New Testament times to the present.

BI702 ADVANCED STUDY IN APOLOGETICS. An advanced, systematic, analytical study of Christian apologetics

BI703 ADVANCED ANALYSIS OF ACTS. An advanced analytical study of the book of Acts employing exegetical, expository, and devotional commentaries.

BI704 ADVANCED ANALYSIS OF I CORINTHIANS. An advanced analytical study of the book of I Corinthians employing exegetical, expository, and devotional commentaries.

BI800 SYNOPTIC GOSPELS. An advanced analytical study of the book of the Synoptic gospels exploring the major issues of faith that influenced the writers, utilizing insights gained from form criticism, literary criticism, literary and redaction criticism to gain insight to the meaning of the gospels.

CHRISTIAN/ CHURCH LEADERSHIP – CL

CL601 EMPOWERED LEADERSHIP. An analytical study of ten principles of leadership based on the servant-leadership model of King David.

CL701 VISIONARY LEADERSHIP FOR CHURCHES. A comprehensive study of principles that are consistent with the visionary leadership necessary to lead a church effectively.

CL702 EFFECTIVE CHURCH LEADERSHIP. A study of observable laws of leadership that have broad application in a local church setting.

CL710 SHEPHERDING THE CHURCH. A study that is centered on the shepherding (pastoral) role of contemporary ministry.

COMMUNICATION - CM

CM700 RESEARCH METHODS. A course designed to provide guidance for the student in the required format and Seminary standards in writing a doctoral dissertation.

CM704 IMPROVING PREACHING SKILLS. An advanced course designed to provide preachers with skills necessary to accurately evaluate and improve their skills.

DISCIPLESHIP - DS

DS600 STRATEGIC PLANNING. An advanced course that equips the student to develop and implement a strategic plan for church growth.

DS601 DISCIPLE MAKING CHURCH. A course that presents a simple, systematic but comprehensive plan for the church to fulfill its primary task of making disciples.

DS602 DISCIPLE MAKING PASTOR. A course that presents an effective, six-point plan for the pastor to lead his church to fulfill its primary task of making disciples.

DS700 PRINCIPLES OF CHURCH GROWTH. A course that provides the student a simple, biblical model for consistent, sustainable church growth.

PROPHETICS - PR

PR801 ADVANCED PROPHETICS I. An advanced study of prophetics focusing on the specific prophetic implications of the Old Testament books of Genesis through Deuteronomy.

PR802 ADVANCED PROPHETICS II. An advanced study of prophetics focusing on the specific prophetic implications of the Old Testament books of Joshua through Esther.

PR803 ADVANCED PROPHETICS III. An advanced study of prophetics focusing on the specific prophetic implications of the Old Testament books of Job through Song of Solomon.

PR804 ADVANCED PROPHETICS IV. An advanced study of prophetics focusing on the specific prophetic implications of the Old Testament books of Isaiah through Daniel.

PR805 ADVANCED PROPHETICS V. An advanced study of prophetics focusing on the specific prophetic implications of the Old Testament books Hosea through Malachi.

PR806 ADVANCED PROPHETICS VI. An advanced study of prophetics focusing on the specific prophetic implications of the New Testament books Matthew through Acts.

PR807 ADVANCED PROPHETICS VII. An advanced study of prophetics focusing on the specific prophetic implications of New Testament books Romans through Jude.

PR808 ADVANCED PROPHETICS VIII. An advanced study of prophetics focusing on the specific prophetic implications of New Testament book of Revelation.

PR809 ADVANCED PROPHETICS IX. An advanced study of prophetics based on some of the best and most widely respected books written on the subject.

PR810 ADVANCED PROPHETICS X. An advanced study of prophetics focusing specifically on the amazing prophetic predictions in the book of Daniel.

PR811 ADVANCED PROPHETICS XI. An advanced study of prophetics focusing specifically on the amazing prophetic predictions as well as things revealed in the book of Revelation.

PR812 ADVANCED PROPHETICS XII. An advanced study of prophetics focusing specifically on the biblical prophecy as it relates to the nation Israel, both in ancient times and today.

PR813 ADVANCED PROPHETICS XIII. An advanced study of prophetics focusing specifically on how the Bible is interpreted in a prophetics context.

PR815 ADVANCED PROPHETICS XV. An advanced study of prophetics focusing specifically on the theological subject of eschatology from an Old Testament perspective.

PR816 ADVANCED PROPHETICS XVI. An advanced study of prophetics focusing specifically on prophetic predictions that are exclusive to the New Testament.

PR818 ADVANCED PROPHETICS XVIII. An advanced study of prophetics focusing specifically on the role of Jewish temples in prophecy, both those in the past and in the future.

RELIGIOUS EDUCATION - RE

RE600 MINISTRY WITH FAMILIES. A broad, comprehensive study of effective methodologies in ministering to families in the church.

RE700 DIRECTING CHRISTIAN EDUCATION. An advanced study in successful direction of Christian education programming in the church.

RE701 CREATIVE BIBLE TEACHING. An advanced study in creative methods of teaching the Bible in a local church.

RE702 LOCAL CHURCH ADMINISTRATION. An advanced study of local church administration.

Theology – TH

TH601 THEOLOGICAL CONCEPTS I. A general introduction to advanced study in theological concepts.

TH602 THEOLOGICAL CONCEPTS II. An advanced conceptual study of the doctrine of God.

TH603 THEOLOGICAL CONCEPTS III. An advanced conceptual study of the doctrine of man.

TH604 THEOLOGICAL CONCEPTS IV. An advanced conceptual study of the doctrine of salvation.

TH605 THEOLOGICAL CONCEPTS V. An advanced conceptual study of the doctrine of salvation—continued.

TH700 UNDERSTANDING THE EMERGENT CHURCH. An advanced study of the theological issues associated with the emergent church movement.

TH701 THEMES IN OLD TESTAMENT THEOLOGY. An advanced study of theological themes found in the Old Testament; i.e. God's self-revelation, the nature of God, creation, providence, the law, covenants, and more.

TH801 ADVANCED SYSTEMATIC THEOLOGY I. A highly advanced theological study of Theology proper.

TH802 ADVANCED SYSTEMATIC THEOLOGY II. A highly advanced study of the theological disciplines of Angelology and Anthropology (from a theological perspective).

TH803 ADVANCED SYSTEMATIC THEOLOGY III. A highly advanced study of the theological discipline of Soteriology.

TH804 ADVANCED SYSTEMATIC THEOLOGY IV. A highly advanced study of the theological disciplines of Ecclesiology and Eschatology.

TH805 ADVANCED SYSTEMATIC THEOLOGY V. A highly advanced study of the theological discipline of Bibliology.

TH806 ADVANCED SYSTEMATIC THEOLOGY VI. A highly advanced study of the theological discipline of Pneumatology.



EXECUTIVE ADMINISTRATION

Neal Weaver - President

B.A., M.Th., Th.D., Eastern Baptist Institute;
D.Min., Baptist Christian University;
Ph.D., Holy Trinity Seminary

Sandra Cory - Executive Vice-President of Administration

B.A. Baptist Christian College;
M.A. North Tennessee Bible Institute;
D.R.E. Holy Trinity Seminary

OFFICE OF INSTITUTIONAL ADVANCEMENT

Mark Crook - Associate Vice-President of Institutional Advancement

B.A., Louisiana Baptist University;
M.A., Louisiana Baptist University;
Ph.D., Louisiana Baptist University

ACADEMIC ADMINISTRATION

Linda Adams - Dean of School of Christian Education

B.A., Texas Baptist Bible College;
M.A., Louisiana Baptist University;
Ph.D., Louisiana Baptist University

Mark A. Crook – Dean of School of Psychology and
Christian Counseling

B.A., Louisiana Baptist University;
M.A., Louisiana Baptist University
Ph.D., Louisiana Baptist University

David Keeny – Dean of School of Biblical Studies

B.A., Baptist Christian College
M.Div., Baptist Bible Graduate School of Theology

Juan Puente – Director of Hispanic Studies

B.A., Seminario Teológico Bautista Mexicano
A.A., Texarkana college
M.A., Ph.D., Louisiana Baptist University
Biblical Counseling Certification Program –
Southwestern Baptist Theological Seminary

Jay Foster - Director of Prison Ministries and Associate Dean of Biblical Studies

B.A., East Texas Baptist University
M.Div., Southwestern Theological Seminary
Ph.D., Louisiana Baptist University and Seminary

SUPPORT ADMINISTRATION

Dr. Diana Puente - Administrative Assistant

Donna Restivo - Administrative Assistant

Peggy Magill - Executive Assistant

Dr. Jay Foster - Director of Prison Ministries

PERSONNEL

Weldon Adams

Th.B. Trinity Baptist College;
B.Ch.Ed. Bethel Baptist Institute;
Th.M., Bethel Baptist Institute;
Th.D., Texas Baptist Bible College;
Ph.D., Baptist Christian University

James Anderson

B.A., Ottawa University;
B.D., Southwestern Baptist Theological Seminary;
Th.M., Southwestern Baptist Theological Seminary;
Th.D., Southwestern Baptist Theological Seminary

Christopher L. Cagan

B.A., University of California at Los Angeles;
M.A., University of California at Los Angeles;
Ph.D., University of California at Los Angeles;
M.Div., Talbot Theological Seminary;
M.A., Ph.D., Claremont Graduate School

Barbara Campbell

B.A., M.Ed., Florida Atlantic University
M.Ed., Centenary College
Ph.D., Louisiana Baptist University

Malcolm O. Couch

B.A., John Brown University;
M.A., Wheaton College;
Th.M. Dallas Theological Seminary;
Th.D., Louisiana Baptist Theological Seminary;
Ph.D., Arkansas Biblical Graduate School

Mike Daniels

B.A. Baptist Christian College;
M.A., Ph.D. Baptist Christian University

Jimmy DeYoung

B.A., Baptist Christian College
M.A., Ph.D., Louisiana Baptist University
D.Min., Tennessee Temple University

Bruce Edwards

B.S., McMurry University

M.R.E., Southwestern Baptist Theological Seminary

Ph.D., Louisiana Baptist University

Ken Fryer

B.M., East Texas Baptist University

M.M., University of Louisiana Monroe

Ed Gonzalez

B.A., M.A., Ph.D., Louisiana Baptist University

Howard Hall

B.A., Baptist Christian College;

M.A., Baptist Christian University;

D.D., Tri-State Baptist College

Billy Hamm

B.A, Baptist Bible College West;

M.S., Evangelical Theological Seminary;

Ph.D., Louisiana Baptist University

D.Min., Liberty Baptist Seminary

Murray Hodge

B.S., University of Southern Alabama

M.A., Louisiana Tech University

Ph.D., Louisiana Baptist University

Jerry Hopkins

B.A., M.A., Eastern Kentucky University

Ph.D., University of Kentucky

Robert L. Hymers

B.A., California State College at Los Angeles;

M.Div., Golden Gate Baptist Theological Seminary;

D.Rel., California Graduate School of Theology;

D.Min., San Francisco Theological Seminary;

Th.D., Louisiana Baptist Theological Seminary

Doo Sik Kim

B.A., M.Div., Hankuk Theological University

Th.D., Kingsway Theological Seminary

William Kincaid

B.A., Baptist Christian College;
M.A., Th.D. Baptist Christian University

Mike Landry

B.A., Baptist Christian College;
M.A., Baptist Christian University;
D.Min., Faith Bible College

Nathan Lorick

B.A., East Texas Baptist University
M.Div., D.Min., Liberty University

Monty Maple

B.A., M.A., Louisiana Baptist University

Fred Moody – Dean Emeritus

B.A. Baptist Bible College
M.A., Assembly of God Theological Seminary;
Ph.D., California Graduate School of Theology;
D.Min., Louisiana Baptist University

Paul Park

B.A., Soong Sil University (Korea);
M.A., Joong Ang University (Korea);
M.A., M.Div., Southern California Seminary;
D.Min., Kingsway Theological Seminary;
Ph.D., Great Plains Baptist Seminary
Ph.D., Louisiana Baptist University

Richard Perez

B.A., Th.M., Carolina University of Theology
D.Min., Temple Baptist Seminary
D.Min., Ph.D., Louisiana Baptist University and
Theological Seminary

David W. Peterson

B.A., Baptist Christian College;
M.A., Baptist Christian University;
Ph.D., Louisiana Baptist University

Stephen Rost

B.S., Bible Baptist College

M.Div., Talbot School of Theology

M.A., Dallas Theological Seminary

Scott Weaver

B.A., Baptist Christian College;

M.A., Ph.D., Louisiana Baptist University

David Wood

B.A., Columbia Bible College

M.Th., Christian Bible College

D.Th., Louisiana Baptist Theological Seminary

DISTINGUISHED VISITING SPEAKERS

Dr. John Ashcroft

Dr. Carl Baugh

Dr. Ergun Caner

Dr. Robert Cornuke

Dr. Jonathan Falwell

Dr. Gary Frazier

Dr. Grant Jeffery

Dr. Tim LaHaye

Dr. Thomas Ice

Dr. Terry Lyles

Larry Maddox

Dr. Rod Masteller

Dr. Chuck Missler

William Monroe

Harold Rawlings

Elmer Towns

BAPTIST HISTORIAN

Thomas Ray

B.A., Garland Baptist College

M.Div., North Tennessee Bible Institute



EDUCATION ANYTIME, ANYWHERE

LBU was founded for the purpose of providing a quality Christian atmosphere.

The university endeavors to provide sound learning experiences so the students can obtain the knowledge, skill, and understanding required for success in their professional field.

The university's mission is to provide rigorous, high-quality, academic study for experienced professionals.

It builds upon professional and personal competence and seeks to enhance that competence through scholarly inquiry and constantly improving ministerial and professional practice.

In this era of continuing education with its positive emphasis on continuing development, it is necessary to continue personal and professional growth to serve more effectively in an educated society and global community.

Our commitment is to providing meaningful lifetime learning.

AROUND THE WORLD

LOUISIANA BAPTIST UNIVERSITY

6301 Westport Avenue
Shreveport, Louisiana 71129
318.686.2360 | www.lbu.edu